

Agenda Item 6B

Page Intentionally Blank

DONNER SUMMIT
PUBLIC UTILITY DISTRICT
WASTEWATER AND FRESH WATER
TREATMENT PLANTS
END OF MONTH OPERATIONS AND MAINTENANCE
SUMMARY

May 2026

Donner Summit Public Utility District Waste Water Flow Data

June 16, 2026
Agenda Item: 6B

MONTH OF May 2026		DSPUD Influent	SLCWD Influent	Total Plant Influent	Total Plant EFF River	Total Plant EFF Irr/RCY Storage	Total Plant EFF Irr/RCY Delivery	DSPUD Fresh Water Treated	SLCWD Fresh Water Treated	Weather	Lake Angela Water Level
DATE	DAY	MGD	MGD	MGD	MGD	MGD	MGD	MGD	MGD	Cond	Elevation
05/01/26	FRI	0.1713	0.0687	0.240	0.211	0.000	0.000	0.085	0.0000	Clear	7192.8
05/02/26	SAT	0.1818	0.0692	0.251	0.211	0.000	0.000	0.065	0.0000	Clear	
05/03/26	SUN	0.1117	0.0723	0.184	0.152	0.000	0.000	0.088	0.0000	Clear	
05/04/26	MON	0.1736	0.0844	0.258	0.211	0.000	0.000	0.043	0.0670	Rain	
05/05/26	TUE	0.2097	0.1023	0.312	0.265	0.000	0.000	0.054	0.0544	Rain	
05/06/26	WED	0.1853	0.0907	0.276	0.232	0.000	0.000	0.049	0.0542	Clear	
05/07/26	THU	0.1609	0.0841	0.245	0.201	0.000	0.000	0.082	0.0582	Clear	
05/08/26	FRI	0.1719	0.0761	0.248	0.205	0.000	0.000	0.070	0.0000	Clear	
05/09/26	SAT	0.1369	0.0771	0.214	0.185	0.000	0.000	0.046	0.0000	Clear	
05/10/26	SUN	0.1374	0.0746	0.212	0.203	0.000	0.000	0.055	0.0000	Clear	
05/11/26	MON	0.1313	0.0747	0.206	0.215	0.000	0.000	0.048	0.0655	Clear	
05/12/26	TUE	0.1311	0.0679	0.199	0.000	0.167	0.001	0.066	0.0654	clear	
05/13/26	WED	0.1250	0.0610	0.186	0.000	0.119	0.010	0.048	0.0425	Clear	
05/14/26	THU	0.1101	0.0599	0.170	0.000	0.178	0.002	0.031	0.0823	Clear	
05/15/26	FRI	0.1302	0.0548	0.185	0.176	0.199	0.000	0.150	0.0000	Clear	
05/16/26	SAT	0.0990	0.0550	0.154	0.148	0.000	0.000	0.068	0.0000	Clear	
05/17/26	SUN	0.1073	0.0557	0.163	0.145	0.000	0.000	0.044	0.0000	Clear	
05/18/26	MON	0.1119	0.0581	0.170	0.140	0.000	0.001	0.053	0.0428	Clear	
05/19/26	TUE	0.1107	0.0603	0.171	0.130	0.000	0.000	0.063	0.0992	Clear	
05/20/26	WED	0.1123	0.0717	0.184	0.135	0.000	0.001	0.078	0.0679	Clear	
05/21/26	THU	0.1070	0.0560	0.163	0.132	0.000	0.000	0.052	0.0997	Clear	
05/22/26	FRI	0.1375	0.0565	0.194	0.182	0.000	0.000	0.052	0.0000	Clear	
05/23/26	SAT	0.1213	0.0707	0.192	0.179	0.000	0.000	0.057	0.0000	Clear	
05/24/26	SUN	0.1130	0.0760	0.189	0.168	0.000	0.000	0.057	0.0000	Clear	
05/25/26	MON	0.1106	0.0684	0.179	0.134	0.000	0.000	0.096	0.1063	Clear	
05/26/26	TUE	0.0887	0.0543	0.143	0.181	0.000	0.004	0.051	0.0690	Rain	
05/27/26	WED	0.0998	0.0532	0.153	0.216	0.000	0.000	0.060	0.0662	Pt. Cloudy	
05/28/26	THU	0.1108	0.0512	0.162	0.143	0.000	0.000	0.063	0.0769	Lt Snow	
05/29/26	FRI	0.0991	0.0499	0.149	0.138	0.000	0.000	0.052	0.0000	Rain	
05/30/26	SAT	0.1107	0.0493	0.160	0.138	0.000	0.000	0.049	0.0000	Clear	
05/31/26	SUN	0.1339	0.0511	0.185	0.172	0.000	0.000	0.056	0.0000	Clear	
5/2026 Daily Totals		4.0419	2.0551	6.097	4.948	0.663	0.019	1.968	1.1176	Rise	7192.8
5/2026 Totalizer Total		4.0419	2.0551	6.097	4.948	0.663	0.019	1.968	1.1176		
Difference		-0.00001	0.00001	0.000	0.000	0.0000	N/A	0.0000	0.0000		
Percentage Difference		0.00%	0.001%	0.000%	0.000%	0.000%	N/A	0.000%	-0.004%		
5/2026 AVG/DAY		130,384	66,294	196,677	159,613	21,387	613	63,484	36,052		
Percentage Flow SLCWD			33.707%								
5/2025 Totalizer Total		5.75360	2.80340	8.5570	8.363	0.000	0.000	6.1930	0.7468		
5/2025 AVG/DAY		185,600	90,432	276,032	269,774	0	0	199,774	24,090		
Percentage Flow SLCWD			32.761%								

Donner Summit Public Utility District WWTP & WTP End of Month Operations and Maintenance Summary

Prepared for: Steve Palmer, General Manager

Prepared by: Jim King, Plant Manager

Date: May 2026

Operations WWTP

- ◆ Discharged 5.0 MG to the river.
- ◆ Discharge to recycled water storage 0.7 MG.
- ◆ Staff removed Membrane Train 2 and the Heat Exchanger from service for the summer.



- ◆ Began supplying water to the cement batch plant.



- ◆ Decanted 7' of clear water from the solids holding tank to the headworks for retreatment.
- ◆ Staff continued collection system zinc sampling.
- ◆ Drained EQ #2.
- ◆ Staff installed the sprinklers on Soda Springs Ski Hill for spray irrigation use.
- ◆ Finished preparing the sludge drying beds for use and began drying sludge.



- ◆ Sent out 2 sludge dumpsters. The snow and rain caused a delay in sludge drying.
- ◆ Staff met with Saur's Engineering to review planning for lift stations 3 and 4 upgrades.

Operations Water Plant

- ◆ Completed and sent out monthly potable water reports to DDW.
- ◆ Staff met with Kingvale representatives to discuss possible maintenance and management agreement to take care of their water system.
- ◆ Staff assisted with the installation of the sonic algae control unit into Lake Angela for the summer season.



- ◆ Staff had multiple water discoloration complaints on Donner Drive and surrounding area. Staff flushed the main lines in the area and at the end of line at the wastewater plant.



- ◆ Had the Piston Bully picked up.



- ◆ Continued tracking the active water level of Lake Angela.

Date	Water Surface Elevation		Storage (MG)	
	2025	2026	2025	2026
Jan	7183.5	7189.0	66.5	80.0
Feb	7187.0	7189.3	74.0	82.0
March	7187.0	7192.2	74.0	88.0
April	7187.0	7192.8	74.0	92.0
May	7192.8	7192.8	92.0	92.0
June				
July				
Aug				
Sept				
Nov				
Dec				

Repairs and Maintenance WWTP

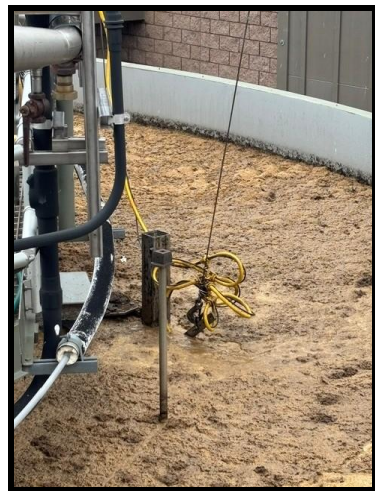
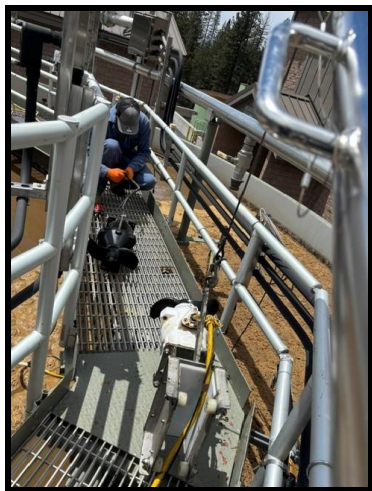
- ◆ Sent in the Dodge 1500 service truck for repair evaluation.
- ◆ Removed the tire chains from the loader.



- ◆ Cleared remaining snow and downed trees from the river access road.



- ◆ Staff trouble shot issues with communication failures of the radios at the sewer lift stations. Staff worked with Aqua Sierra Controls and Control Point to figure out the issues.
- ◆ Replace a failed mixer in Reactor 2 with spare. Sent failed unit in for repairs.



- ◆ Replaced head light bulb in Dodge 1500 service truck.
- ◆ Assisted Pioneer Electric with wiring in the storage return pump at the recycled water and irrigation pump building.



- ◆ Replaced failed valve on membrane skid 1 permeate pump.



- ◆ Replaced the failed chlorine feed pump on the membrane maintenance system.



Repairs and Maintenance WTP

- ◆ Removed the tracks and installed tires on the UTV.



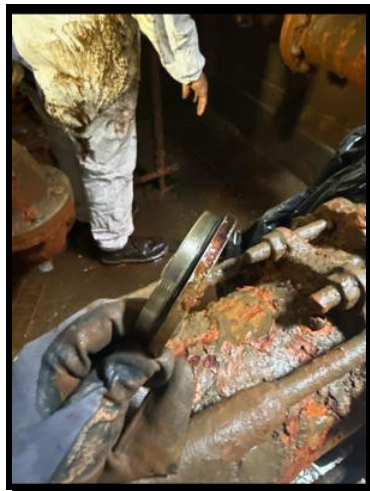
- ◆ Staff installed a new pH meter at the chlorine monitoring station.



- ◆ Staff assisted Holt with the standby generator service.



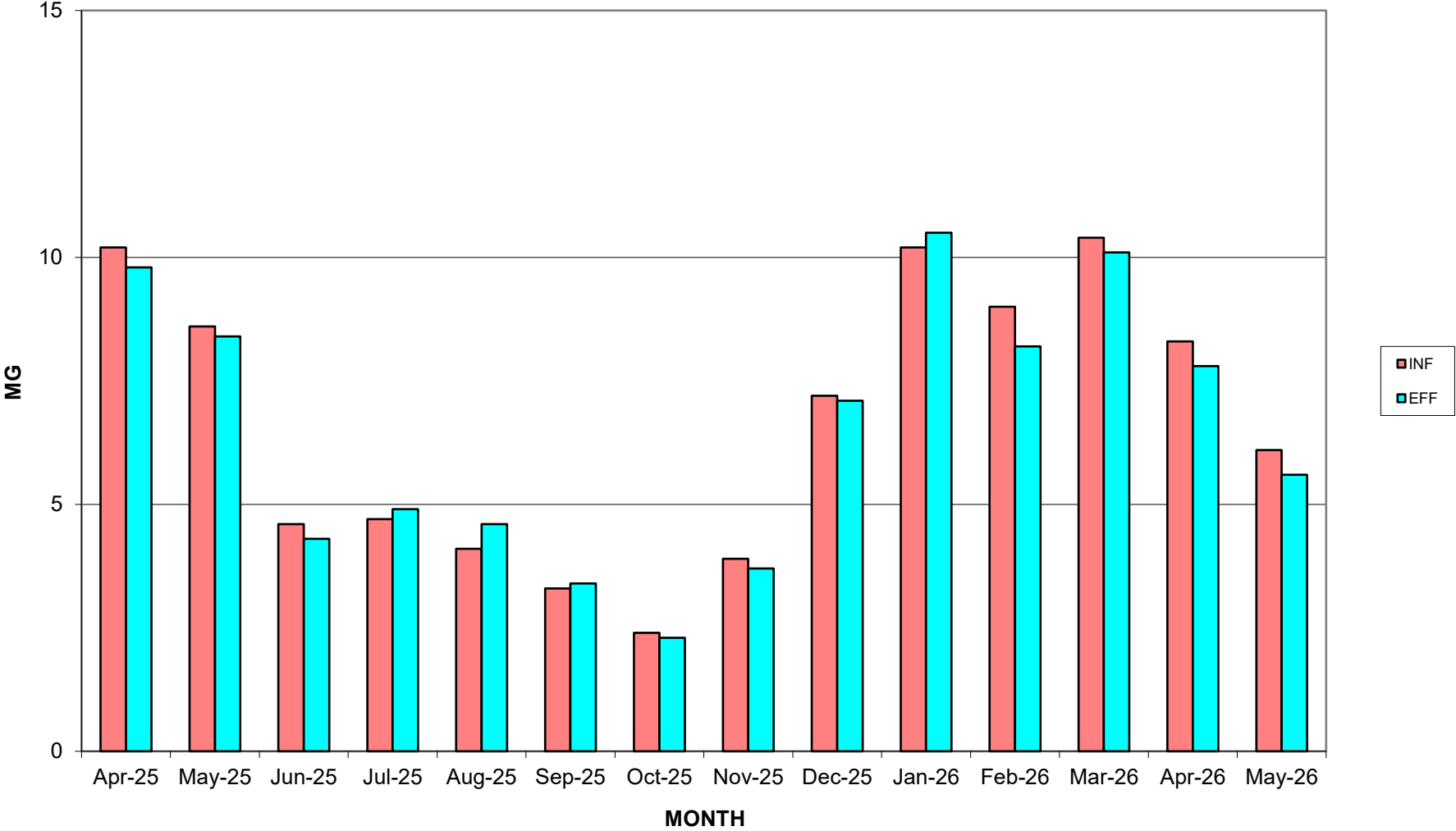
- ◆ Staff assisted contractor with trouble shooting and fixing the Pressure Reducing Station control valve. Found rocks in the valve and removed. Installed a new type of end on the valve to help prevent this from happening again. This could have been the cause for the discolored water issues below the valve.



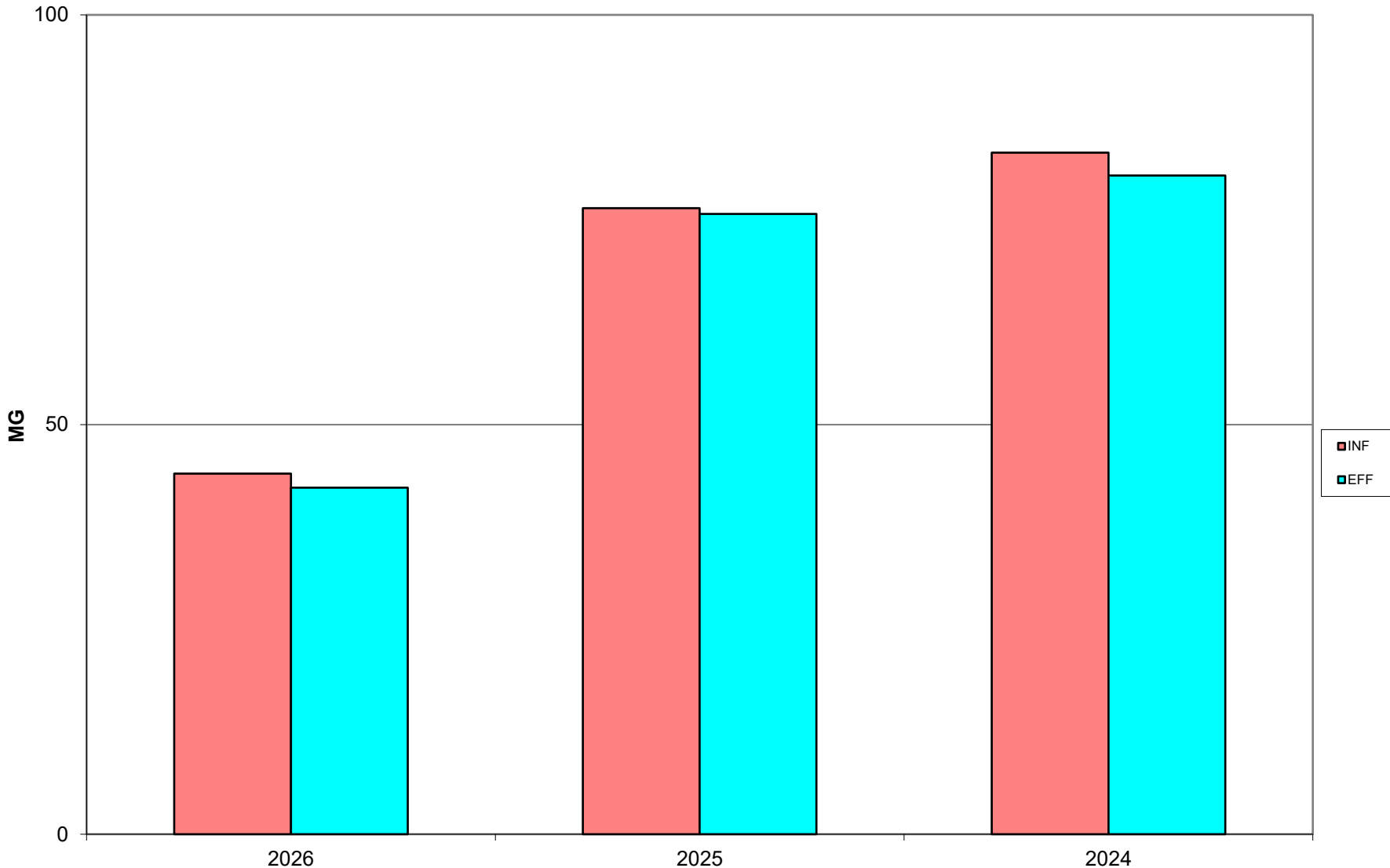
Laboratory

- ◆ Continued river discharge testing.
- ◆ Began recycled water testing.
- ◆ Collected the annual Bioassay samples for testing.

**DONNER SUMMIT PUD WWTP
TOTAL INFLUENT FLOW TO TOTAL
EFFLUENT FLOW YEAR 2025/2026**



**DONNER SUMMIT PUD WWTP
ANNUAL TOTAL INFLUENT FLOW TO TOTAL EFFLUENT FLOW
2026 DATA THROUGH MAY**



**DONNER SUMMIT PUD
WWTP EFFLUENT FLOW TO RECY DELIVERY
YEARS 2025/2026**

