

Agenda Item: 6B

DONNER SUMMIT
PUBLIC UTILITY DISTRICT
WASTEWATER AND FRESH WATER
TREATMENT PLANTS
END OF MONTH OPERATIONS AND MAINTENANCE
SUMMARY

JANUARY 2026

Donner Summit Public Utility District Waste Water Flow Data

February 24, 2026
Agenda Item: 6B

| MONTH OF January 2026 | | DSPUD Influent | SLCWD Influent | Total Plant Influent | Total Plant EFF River | Total Plant EFF Snow Storage | Total Plant EFF Snow Delivery | DSPUD Fresh Water Treated | SLCWD Fresh Water Treated | Weather | Comments |
|-----------------------------|-----|-------------------|-------------------|-------------------------|--------------------------|------------------------------------|-------------------------------------|---------------------------------|---------------------------------|-------------|----------|
| DATE | DAY | MGD | MGD | MGD | MGD | MGD | MGD | MGD | MGD | Cond | |
| 01/01/26 | THU | 0.44654 | 0.13946 | 0.586 | 0.689 | 0.0000 | 0.0000 | 0.080 | 0.0329 | Rain | |
| 01/02/26 | FRI | 0.53051 | 0.13749 | 0.668 | 0.720 | 0.0000 | 0.0000 | 0.100 | 0.0878 | Rain/Snow | 1" Snow |
| 01/03/26 | SAT | 0.26886 | 0.11214 | 0.381 | 0.389 | 0.0000 | 0.0000 | 0.145 | 0.1200 | Rain/Snow | 1" Snow |
| 01/04/26 | SUN | 0.19116 | 0.09184 | 0.283 | 0.285 | 0.0000 | 0.0000 | 0.167 | 0.0000 | Rain/Snow | 1" Snow |
| 01/05/26 | MON | 0.19802 | 0.08298 | 0.281 | 0.282 | 0.0000 | 0.0000 | 0.080 | 0.0776 | Snow | 2" Snow |
| 01/06/26 | TUE | 0.19966 | 0.07134 | 0.271 | 0.260 | 0.0000 | 0.0000 | 0.068 | 0.0204 | Lt Rain | |
| 01/07/26 | WED | 0.16664 | 0.08436 | 0.251 | 0.239 | 0.0000 | 0.0000 | 0.051 | 0.0523 | Snow | 4 " Snow |
| 01/08/26 | THU | 0.16479 | 0.06521 | 0.230 | 0.220 | 0.0000 | 0.0000 | 0.063 | 0.0429 | Clear | |
| 01/09/26 | FRI | 0.51029 | 0.06971 | 0.580 | 0.274 | 0.0000 | 0.0010 | 0.088 | 0.0000 | Clear | |
| 01/10/26 | SAT | 0.20551 | 0.08449 | 0.290 | 0.298 | 0.0000 | 0.0000 | 0.079 | 0.0000 | Clear | |
| 01/11/26 | SUN | 0.21013 | 0.07987 | 0.290 | 0.280 | 0.0000 | 0.0000 | 0.077 | 0.0608 | Clear | |
| 01/12/26 | MON | 0.24174 | 0.06126 | 0.303 | 0.292 | 0.0000 | 0.1900 | 0.088 | 0.0413 | Clear | |
| 01/13/26 | TUE | 0.20395 | 0.06605 | 0.270 | 0.253 | 0.0000 | 0.0260 | 0.079 | 0.0759 | Clear | |
| 01/14/26 | WED | 0.40149 | 0.06651 | 0.468 | 0.451 | 0.0000 | 0.2510 | 0.065 | 0.0606 | Clear | |
| 01/15/26 | THU | 0.37866 | 0.07634 | 0.455 | 0.441 | 0.0000 | 0.1910 | 0.056 | 0.0885 | Clear | |
| 01/16/26 | FRI | 0.33475 | 0.06625 | 0.401 | 0.389 | 0.0000 | 0.2000 | 0.090 | 0.0000 | Clear | |
| 01/17/26 | SAT | 0.25681 | 0.08719 | 0.344 | 0.339 | 0.0000 | 0.0000 | 0.051 | 0.0000 | Clear | |
| 01/18/26 | SUN | 0.29830 | 0.09670 | 0.395 | 0.389 | 0.0000 | 0.0240 | 0.090 | 0.0634 | Clear | |
| 01/19/26 | MON | 0.17125 | 0.08975 | 0.261 | 0.257 | 0.0000 | 0.0060 | 0.086 | 0.0904 | Clear | |
| 01/20/26 | TUE | 0.20142 | 0.06358 | 0.265 | 0.249 | 0.0000 | 0.0170 | 0.114 | 0.0519 | Clear | |
| 01/21/26 | WED | 0.17636 | 0.05964 | 0.236 | 0.037 | 0.0000 | 0.0160 | 0.059 | 0.0606 | Clear | |
| 01/22/26 | THU | 0.22875 | 0.06025 | 0.289 | 0.258 | 0.0000 | 0.0000 | 0.064 | 0.0724 | Clear | |
| 01/23/26 | FRI | 0.25592 | 0.06508 | 0.321 | 0.308 | 0.0000 | 0.0180 | 0.081 | 0.0000 | Clear | |
| 01/24/26 | SAT | 0.18460 | 0.07940 | 0.264 | 0.255 | 0.0000 | 0.0760 | 0.067 | 0.0000 | Clear | |
| 01/25/26 | SUN | 0.21571 | 0.07229 | 0.288 | 0.281 | 0.0000 | 0.0810 | 0.085 | 0.0000 | Clear | |
| 01/26/26 | MON | 0.15877 | 0.06823 | 0.227 | 0.073 | 0.0000 | 0.0900 | 0.078 | 0.0800 | Clear | |
| 01/27/26 | TUE | 0.12583 | 0.05517 | 0.181 | 0.141 | 0.0000 | 0.0470 | 0.075 | 0.0442 | Clear | |
| 01/28/26 | WED | 0.18496 | 0.05404 | 0.239 | 0.214 | 0.0000 | 0.0590 | 0.052 | 0.0697 | Clear | |
| 01/29/26 | THU | 0.22214 | 0.05986 | 0.282 | 0.260 | 0.0000 | 0.0040 | 0.076 | 0.0842 | Clear | |
| 01/30/26 | FRI | 0.23536 | 0.06064 | 0.296 | 0.275 | 0.0000 | 0.0000 | 0.054 | 0.0000 | Clear | |
| 01/31/26 | SAT | 0.21654 | 0.07346 | 0.290 | 0.283 | 0.0000 | 0.0000 | 0.068 | 0.0000 | Clear | |
| 1/2026 Daily Totals | | 7.785 | 2.401 | 10.186 | 9.381 | 0.000 | 1.297 | 2.476 | 1.3777 | 2025 | 9" Snow |
| 1/2026 Totalizer Total | | 7.785 | 2.401 | 10.186 | 9.381 | 0.000 | 1.297 | 2.476 | 1.4648 | | 19" Snow |
| Difference | | -0.00041 | 0.00041 | 0.00000 | 0.0000 | 0.0000 | N/A | 0.0000 | 0.0871 | | |
| Percentage Difference | | -0.01% | 0.017% | 0.000% | 0.000% | #DIV/0! | N/A | 0.000% | 5.949% | | |
| 1/2026 AVG/DAY | | 251,129 | 77,452 | 328,581 | 302,613 | 0 | 41,839 | 79,871 | 47,252 | | |
| Percentage Flow SLCWD | | | 23.572% | | | | | | | | |
| 1/2025 Totalizer Total | | 6.57654 | 1.50146 | 8.0780 | 7.123 | 0.839 | 0.899 | 7.4220 | 2.060278 | | |
| 1/2025 AVG/DAY | | 212,146 | 48,434 | 260,581 | 229,774 | 27,065 | 29,000 | 239,419 | 66,461 | | |
| Percentage Flow SLCWD | | | 18.587% | | | | | | | | |

Donner Summit Public Utility District WWTP & WTP End of Month Operations and Maintenance Summary

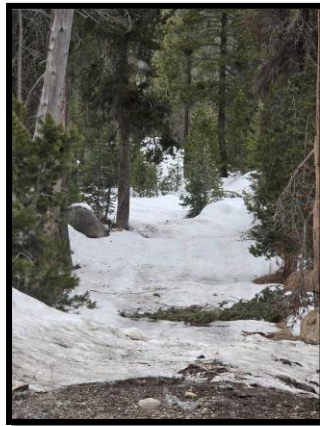
Prepared for: Steve Palmer, General Manager

Prepared by: Jim King, Plant Manager

Date: January 2026

Operations WWTP

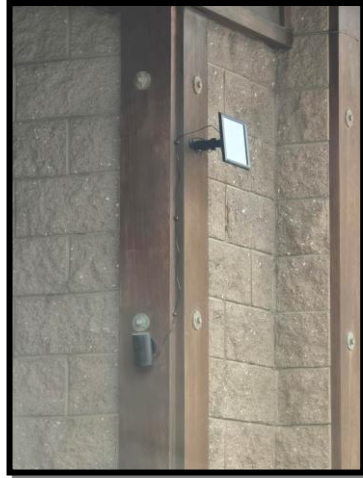
- ◆ Discharged 9.4 MG to the river.
- ◆ Snow making water discharge 1.3 MG.
- ◆ Completed and turned in the annual reports for 2025.
- ◆ Cleared the road down to the river using the Piston Bully.



- ◆ Decanted 6' of clear water from the solids holding tank to the headworks for retreatment.



- ◆ Staff installed ring cameras at the administration building.



- ◆ Staff refilled all outlying standby generators.



- ◆ Staff began feeding a small amount of caustic soda at sewer lift station L-8 to attempt to reduce the amount of zinc believed to be coming from the Sugar Bowl area. By using this method, the hope is to raise the pH to a level that will help precipitate out the zinc out before it gets to the wastewater treatment plant or during the beginning treatment processes at the treatment plant.



- ◆ Completed the installation of the wireless router in the operations office.
- ◆ Staff were continuing to clear snow from around the district’s plants and sewer pump stations.
- ◆ Switched from river discharge to snow storage once during the month.
- ◆ Staff continued to deal with power issues throughout the district, resetting equipment controls and checking all equipment and outlying stations.

Operations Water Plant

- ◆ Completed and sent out monthly potable water reports to DDW.
- ◆ Staff replaced a failed water meter that was leaking at the Tri Lodges.



- ◆ Continued tracking the active water level of Lake Angela.

| Date | Water Surface Elevation | | Storage (MG) | |
|-------|-------------------------|--------|--------------|------|
| | 2025 | 2026 | 2025 | 2026 |
| ◆ Jan | 7183.5 | 7189.0 | 66.5 | 80.0 |
| Feb | | | | |
| March | | | | |
| April | | | | |
| May | | | | |
| June | | | | |
| July | | | | |
| Aug | | | | |
| Sept | | | | |
| Nov | | | | |
| Dec | | | | |

Repairs and Maintenance WWTP

- ◆ Assisted outside contractor (Holt) with trouble shooting the main standby power transfer switch. They found some issues and put the switch back online with advice on needed maintenance.



- ◆ Replaced UPS batterie at sewer lift station L-4.
- ◆ Replaced the sewer maintenance hole cover and ring on the line at the entrance to Sherritt Ln.



- ◆ Serviced the F-250 and Dodge 1500 trucks.

Repairs and Maintenance WTP

- ◆ Replaced a UPS battery and failed fuse on the radio telemetry at Boreal Pump Station.

- ◆ Replaced the left front track on the UTV.



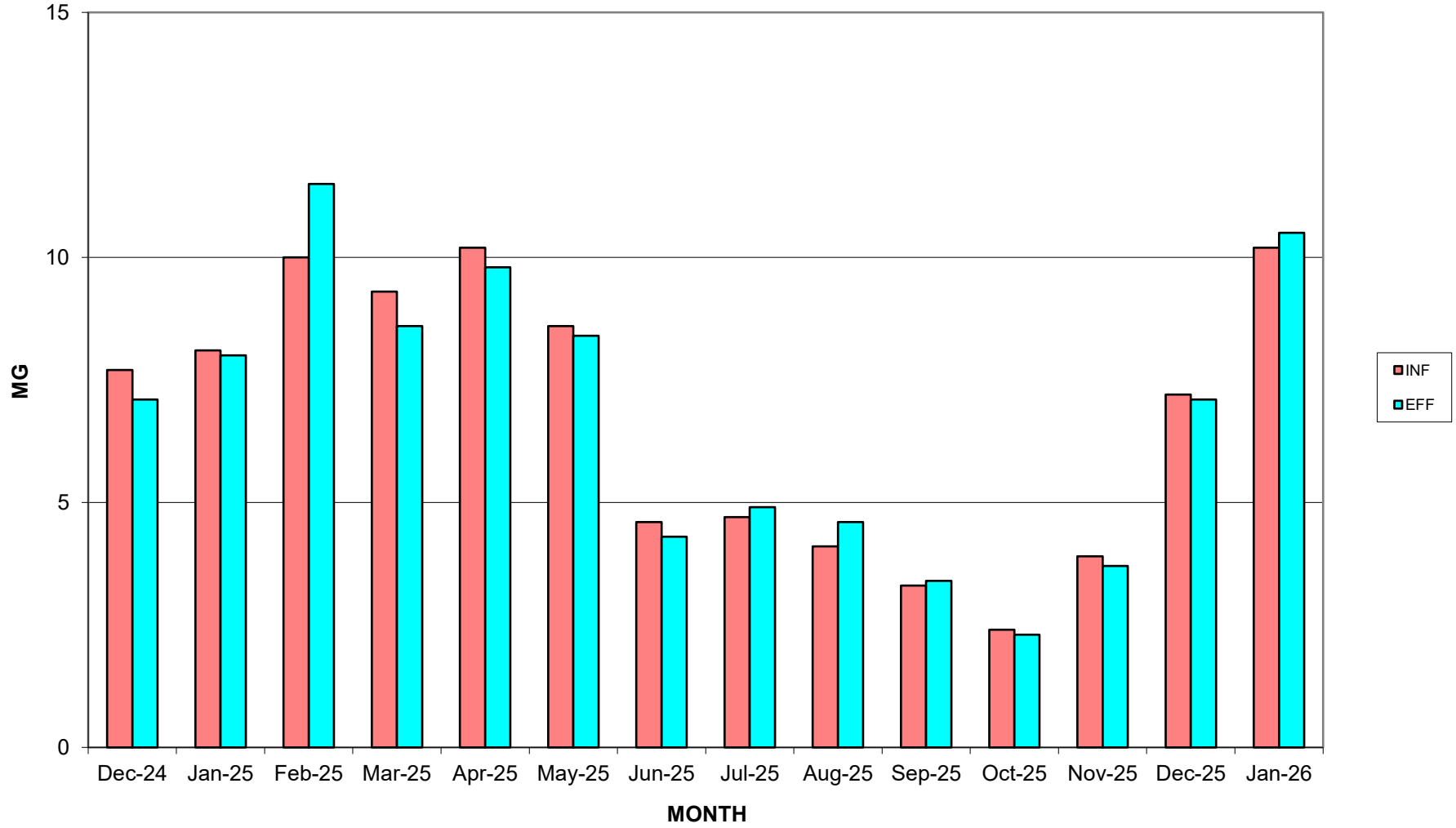
- ◆ Serviced the chlorine analyzer at Big Bend Plant.



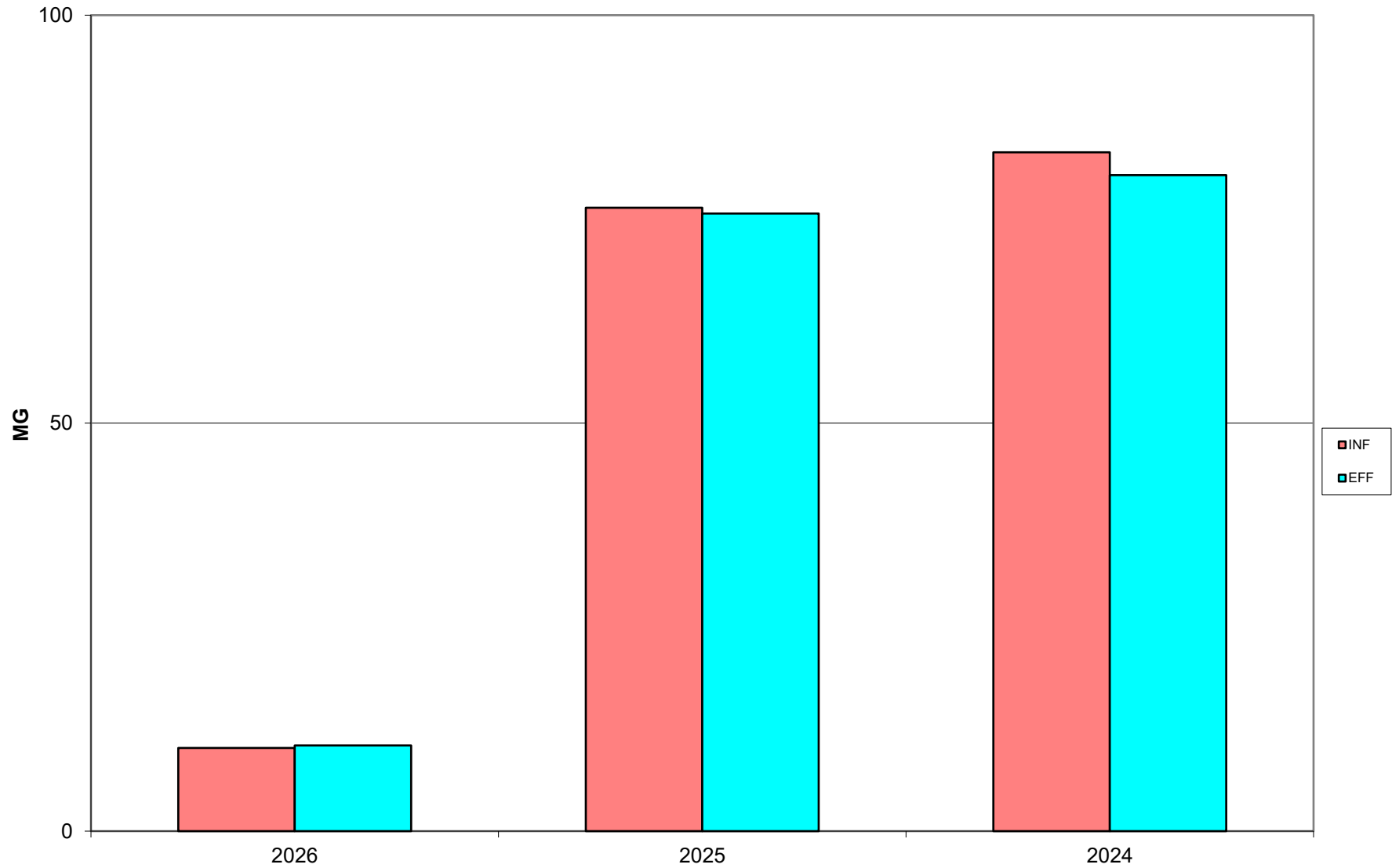
Laboratory

- ◆ Continued river discharge testing.
- ◆ Continued snow water storage testing.

**DONNER SUMMIT PUD WWTP
TOTAL INFLUENT FLOW TO TOTAL
EFFLUENT FLOW YEAR 2024/2025/2026**



**DONNER SUMMIT PUD WWTP
ANNUAL TOTAL INFLUENT FLOW TO TOTAL EFFLUENT FLOW
2026 DATA THROUGH JANUARY**



**DONNER SUMMIT PUD WWTP
AVG EFFLUENT FLOW TO SNOW
STORAGE/PRODUCTION
YEARS 2024/2025/2026**

