

Agenda Item: 6B

DONNER SUMMIT
PUBLIC UTILITY DISTRICT
WASTEWATER AND FRESH WATER
TREATMENT PLANTS
END OF MONTH OPERATIONS AND MAINTENANCE
SUMMARY

MARCH 2025

Donner Summit Public Utility District WWTP & WTP End of Month Operations and Maintenance Summary

Prepared for: Steve Palmer, General Manager

Prepared by: Jim King, Plant Manager

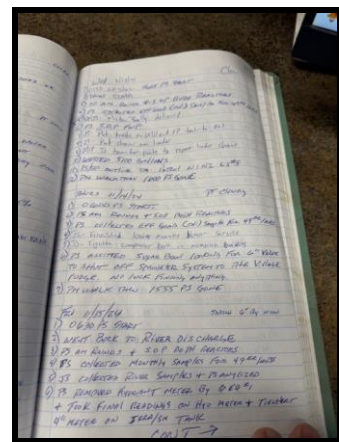
Date: March 2025

Operations WWTP

- ◆ Discharged 8.6 MG to River.
- ◆ Staff spent time moving and clearing snow from buildings and equipment.
- ◆ Finished emptying the Irrigation/Recycled Water tank.



- ◆ Staff received training in proper logbook entries.



- ◆ Was unable to decant any clear water from the sludge holding tank.



- ◆ Staff spent a day touring the Lincoln Wastewater Reclamation Facility.
- ◆ Welcomed a new staff member, Craig Heidepriem to the group.
- ◆ Completed and sent in the annual Recycled Water Report to the state.
- ◆ Completed and sent in the annual Air Quality Report for the district's standby generators.



- ◆ Processed 0 USA dig tickets.

Operations Water Plant

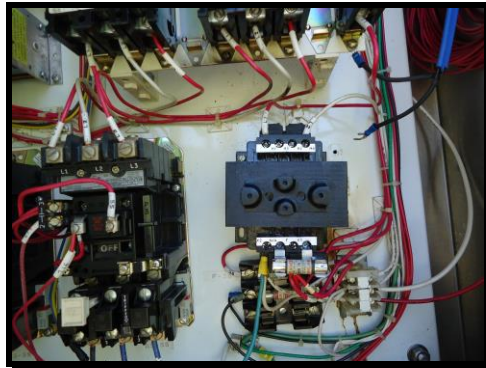
- ◆ Completed and sent out monthly potable water reports to DDW.
- ◆ Completed and sent in the Electronic Annual Report (EAR) for the Donner Summit and Big Bend.
- ◆ Staff continued to make updates to the new state copper and lead line database.

- ◆ Continued tracking the active water level of Lake Angela.

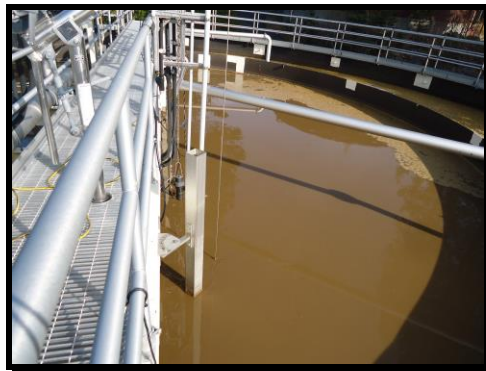
◆ Date	Water Surface Elevation (FT MSL)	Storage (MG)
7/31/24	7189.3	83
8/31/24	7186.1	70
9/30/24	7185.4	68.5
10/31/24	7184.4	67.5
11/15/24	7183.5	66.5
12/23/24	7183.5	66.5
1/31/25	7185.0	68.0
2/28/25	7187.0	74.0
3/31/25	7187.0	74.0

Repairs and Maintenance WWTP

- ◆ Staff trouble shot issues with sewer lift station L-8. Found failed fuse on the main control. Replaced fuse all ok.



- ◆ Removed a failed mixer in the anoxic zone of Reactor #1 for repairs. Installed a spare, but smaller mixer until repairs are made to the original.



- ◆ Unplugged the floor drain in the polymer feed building.
- ◆ Assisted SnowCat Rental mechanic with repairs to the Piston Bully drive controls.

- ◆ Found the heat exchanger for the standby generator at sewer lift station N-2 leaking and cracked. Ordered a replacement and will install when received.



Repairs and Maintenance WTP

- ◆ Repaired the broken inlet line for filter #1.

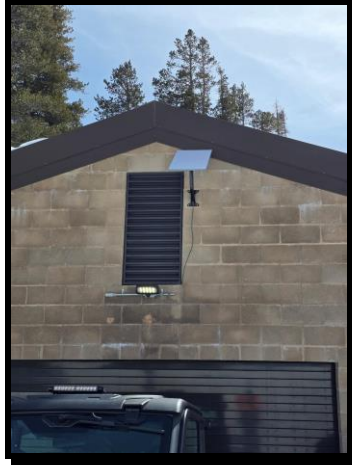


- ◆ Investigated changing out the backflow device and flow meters in the Cal Trans vault for the rest areas.

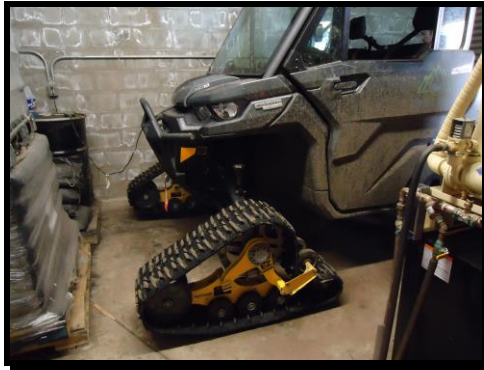


- ◆ Found the backwash valve on filter #2 failed. Ordered a replacement and will install when received.

- ◆ Installed equipment for Star Link to be used at the plant instead of radio for communication.



- ◆ Replaced a boggie wheel on the UTV.



- ◆ Replaced all the chemical feed bushings inside the raw water inlet vault.



- ◆ Replaced a G-5 Box at the intersection of Donner Pass Rd and Sherritt Ln.



Laboratory

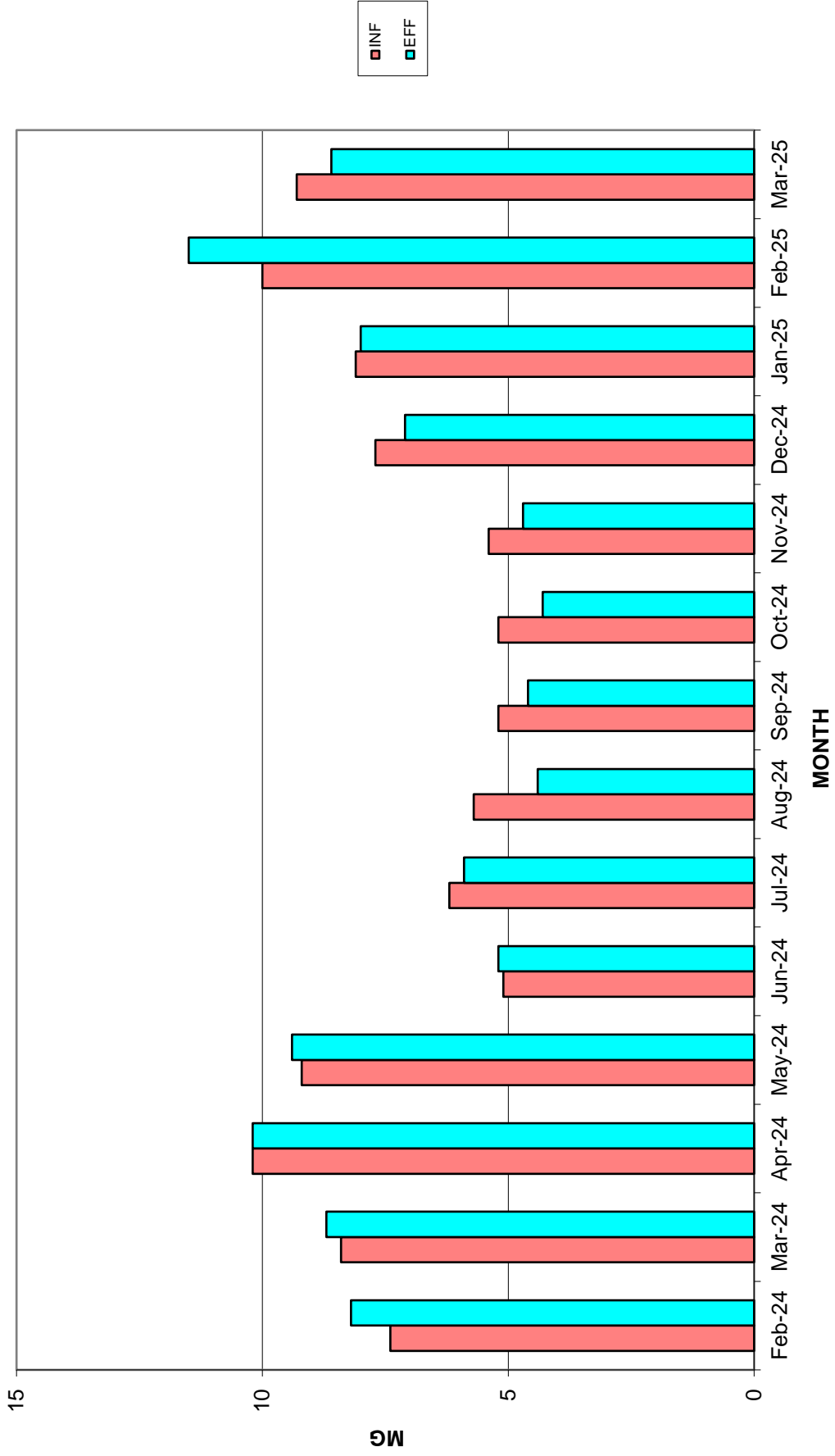
- ◆ Continued river discharge testing along with periodic snow discharge testing.
- ◆ Collected the bi-annual effluent bioassay samples.

Donner Summit Public Utility District Waste Water Flow Data

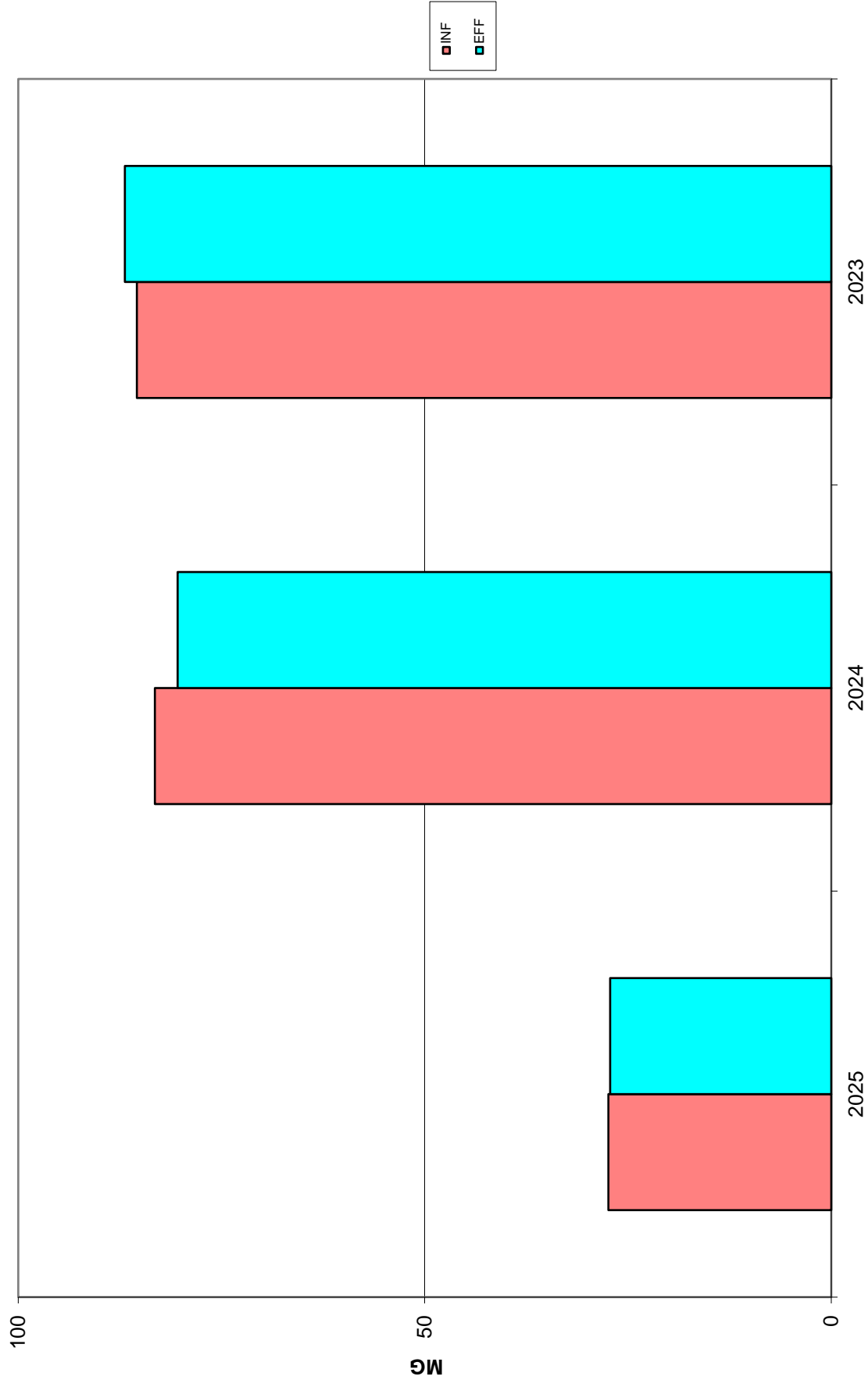
April 15, 2025
Agenda Item: 6B

MONTH OF		DSPUD	SLCWD	Total Plant	Total Plant	Total Plant	Total Plant	Total Plant	DSPUD	SLCWD	Weather	Comments
March	DAY	Influent	Influent	EFF River	EFF Snow Storage	EFF Snow Delivery	Fresh Water Treated	Fresh Water Treated	Fresh Water Treated	Cond		
2025	DATE	MGD	MGD	MGD	MGD	MGD	MGD	MGD	MGD	MGD	Cond	
	03/01/25	0.2761	0.0819	0.3580	0.3460			0.256	0.0000	Clear		2" Snow
	03/02/25	0.2389	0.0801	0.3190	0.3100			0.204	0.0000	Snow		1" Snow
	03/03/25	0.2233	0.0657	0.2890	0.2410			0.261	0.0690	Cloudy		
	03/04/25	0.1808	0.0622	0.2430	0.2770			0.203	0.0707	Cloudy		
	03/05/25	0.2127	0.0623	0.2750	0.2460			0.169	0.0713	Lt Rain/Snow		1" Snow
	03/06/25	0.2287	0.0743	0.3030	0.2620			0.201	0.0540	Snow		3" Snow
	03/07/25	0.2013	0.0647	0.2660	0.2730			0.173	0.0405	Clear		
	03/08/25	0.2553	0.0797	0.3350	0.2370			0.133	0.0315	Clear		
	03/09/25	0.2398	0.0732	0.3130	0.2710			0.138	0.0000	Clear		
	03/10/25	0.2137	0.0623	0.2760	0.3340			0.178	0.0798	Clear		
	03/11/25	0.1793	0.0597	0.2390	0.1920			0.234	0.0567	Clear		
	03/12/25	0.2167	0.0633	0.2800	0.2350			0.230	0.0292	Rain		23" Snow
	03/13/25	0.2300	0.0630	0.2930	0.2810			0.227	0.0382	Snow		9" Snow
	03/14/25	0.2135	0.0645	0.2780	0.3140			0.185	0.0000	Snow		7" Snow
	03/15/25	0.2251	0.0769	0.3020	0.2690			0.198	0.0000	Snow		
	03/16/25	0.3079	0.0711	0.3790	0.2530			0.211	0.0000	Clear		
	03/17/25	0.2048	0.0622	0.2670	0.2600			0.224	0.0695	Snow		7" Snow
	03/18/25	0.2158	0.0592	0.2750	0.2600			0.203	0.1148	Pt Cloudy		
	03/19/25	0.1835	0.0595	0.2430	0.2500			0.162	0.0603	Clear		
	03/20/25	0.2252	0.0598	0.2850	0.2590			0.160	0.0829	Snow		2" Snow
	03/21/25	0.1834	0.0656	0.2490	0.2260			0.180	0.0000	Cloudy		
	03/22/25	0.2639	0.0771	0.3410	0.2510			0.233	0.0000	Pt Cloudy		
	03/23/25	0.2384	0.0746	0.3130	0.3070			0.189	0.0000	Clear		
	03/24/25	0.2441	0.0699	0.3140	0.2900			0.216	0.0691	Clear		
	03/25/25	0.2201	0.0729	0.2930	0.3050			0.178	0.0711	Clear		
	03/26/25	0.2414	0.0806	0.3220	0.2890			0.175	0.0607	Clear		
	03/27/25	0.2391	0.0929	0.3320	0.3070			0.175	0.0820	Cloudy		
	03/28/25	0.2978	0.0902	0.3880	0.3710			0.224	0.0000	Rain		
	03/29/25	0.2325	0.0925	0.3250	0.2380			0.187	0.0000	Clear		
	03/30/25	0.2599	0.0881	0.3480	0.3420			0.217	0.0000	Snow		2" Snow
	03/31/25	0.2122	0.0908	0.3030	0.3060			0.216	0.0788	Snow		3" Snow
												60" Snow
												122" Snow
	3/2025 Daily Totals	7.1052	2.2408	9.3460	8.602	0.000	0.000	6.140	1.2303	2024		
	3/2025 Totalizer Total	7.1052	2.2408	9.3460	8.602	0.0000	0.000	6.140	1.2303			
	Difference	0.0000	0.00000	0.0000	0.0000	0.0000	N/A	0.0000	0.0000			
	Percentage Difference	0.00%	0.0000%	0.0000%	0.0000%	#DIV/0!	N/A	0.0000%	0.0000%			
	3/2025 AVG/DAY	229,200	72,284	301,484	277,484	0	0	198,065	39,686			
	Percentage Flow SLCWD		23.976%									
	3/2024 Totalizer Total	6.22620	2.14080	8.3670	8.685	0.000	0.000	5.5430	1.323029			
	3/2024 AVG/DAY	200,845	69,058	269,903	280,161	0	0	178,806	42,678			

DONNER SUMMIT PUD WWTP
TOTAL INFLUENT FLOW TO TOTAL EFFLUENT FLOW
YEAR 2024/2025



**DONNER SUMMIT PUD WWTP
ANNUAL TOTAL INFLUENT FLOW TO TOTAL EFFLUENT FLOW
2025 DATA THROUGH MARCH**



**DONNER SUMMIT PUD WWTP
AVG EFFLUENT FLOW TO SNOW STORAGE/PRODUCTION
YEARS 2024/2025**

