

Donner Summit Public Utility District Conducts Rate Study

Donner Summit Public Utility District (District) is conducting a five-year rate study to examine the District's current financial health and future funding needs. The District completes rate studies every five years in line with industry standards and the last study was completed in 2021. The goal is to complete the study in Spring 2026 and, if rate adjustments are necessary, implement new rates starting July, 1 2026.

District staff and the Board of Directors have been actively engaged with the rate consultant. Presentations outlining the rate study process and projected expenses and revenue needs were made at the September 16 and December 16, 2025 and January 20, 2026 board meetings. The presentations are available on the District's website at www.dspud.org/2026-rate-study. A draft rate study report will be presented at the March 17, 2026 meeting, and the Board may direct staff to start the rate-setting process by scheduling the public hearing and sending the required notices to property owners. Customers are encouraged to attend the March 17th meeting to learn more about the proposed rates and potential rate impacts.

The March 17th meeting starts at 6 p.m. and will be held at the District board room located at 53823 Sherritt Lane, Donner Summit or via zoom. Online participation instructions are included on the most recent agenda posted on the Homepage.

Scan for rate study info



Board Meetings

Most Recent Agenda

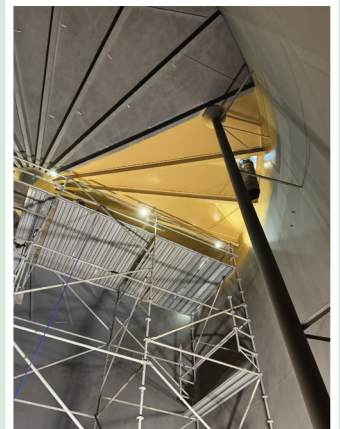
Recent Improvement Projects

Providing safe, reliable and regulatory-compliant water and sewer services require ongoing maintenance and improvements. Recently, DSPUD completed an interior coating of Reservoir 2 near the Boreal Ski Resort at a cost of just under \$400,000. Unfortunately, the District did not have sufficient funds for the entire rehabilitation project and only completed the critical coating of the tank's interior. Without periodic rehabilitation, the tank would continue to deteriorate ultimately resulting in full replacement at an estimated cost of \$1.5M.

The current rate study is evaluating the funding needed to complete additional rehabilitation projects for both the water and sewer systems as identified in the District's capital improvement plan. Sample water projects include coating Reservoir 1, pump station rehabilitation at Boreal, and maintenance at the Lake Angela Dam. Wastewater capital improvements include upgrades to lift stations, wastewater sludge press, and coating reactors. All projects play an important role in maintaining system reliability and protecting public health.



Ceiling Before



Ceiling After



Interior Wall Before



Interior Wall After

The District Needs Your Contact Information!

The District is requesting contact information for its customers in the event of emergencies, service outages or questions regarding your account. Please scan the QR Code or visit <http://bit.ly/3Zyub5P> to fill out the form with your name, service address or account number, phone number and email address. This information will only be used for official District communications.

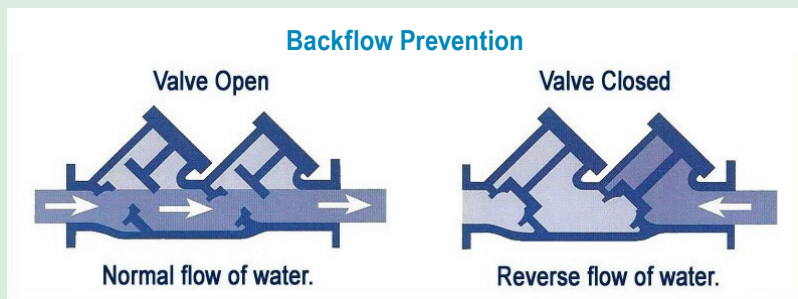
Scan



Remaining Compliant With State and Federal Regulations

Backflow Prevention / Cross Connection Control Guidelines

New State guidelines require water agencies to strengthen protections against contamination of drinking water through cross-connections. A cross-connection occurs when a potable water line is connected to a non-potable source that could allow backflow of contaminants into the public water supply. Common residential backflow risks are often related to irrigation/sprinkler or fire systems. Backflow devices are installed to ensure cross contamination does not occur and property owners are responsible for maintaining these devices.



The District has prepared and submitted a Cross Connection Control Plan (CCCP) to the State Water Resources Control Board (SWRCB). The District will next perform a hazard assessment to identify actual and potential cross-connection hazards at each water connection. As part of the CCCP, the District will be sending each customer a survey to help identify if your property has a properly functioning backflow device. The District asks for your cooperation with the survey.

Lead Service Line Inventory

Additional new guidelines from the EPA and SWRCB require the District to inventory all water service laterals, identify any that contain lead, and develop a plan to replace those that contain lead. The District has completed its initial inventory and found no lead or galvanized service lines in its service area, however there were 59 District-owned and 141 customer-owned service laterals comprised of unknown material. Affected customers have been notified if there is a lateral of unknown material connected to their property. The District will excavate these laterals in the summer of 2026 and identify whether any are constructed from lead-containing material. Affected customers will be notified with the steps needed to address the issue. The inventory and additional information about the EPA Lead and Copper Rule are posted on the District's website at www.dspud.org/water-service-line-inventory.

Questions? Contact the District during office hours Monday-Friday 8 a.m. to 4 p.m. at (530) 426-3456 or email at info@DSPUD.



DONNER SUMMIT
PUBLIC UTILITY DISTRICT

53823 Sherritt Lane
Post Office Box 610
Soda Springs, CA 95728

**Read about the
latest District news
and March 17th
Board Meeting!**