

Agenda Item 6B

DONNER SUMMIT
PUBLIC UTILITY DISTRICT
WASTEWATER AND FRESH WATER
TREATMENT PLANTS
END OF MONTH OPERATIONS AND MAINTENANCE
SUMMARY

April 2026

Donner Summit Public Utility District WWTP & WTP End of Month Operations and Maintenance Summary

Prepared for: Steve Palmer, General Manager

Prepared by: Jim King, Plant Manager

Date: April 2026

Operations WWTP

- ◆ Discharged 7.8 MG to the river.
- ◆ Staff dealt with multiple power issues to equipment throughout the district. Having to check and restart equipment as needed.
- ◆ Staff spent multiple hours moving snow from the district facilities.



- ◆ Decanted 8' of clear water from the solids holding tank to the headworks for retreatment.
- ◆ Staff continued to collect zinc samples out in the collection system to pinpoint its source.



- ◆ Staff made multiple adjustments to the treatment processes due to changing condition of the influent. These include air and chemicals.



- ◆ Due to the mixer failing in the soda ash silo, staff brought down caustic soda to use for pH adjustment until the mixer is back in service.



- ◆ Staff met with the contractors for the Sugar Bowl Gondola upgrade project to help locate the current sewer lines for upcoming construction.



- ◆ Conducted a sewer lateral test at 701 Mules Ear.

Operations Water Plant

- ◆ Completed and sent out monthly potable water reports to DDW.
- ◆ Shut off water service to the Sugar Bowl gondola building for the upcoming renovations and construction.



- ◆ Checked on a possible water leak on Donner Dr. Staff determined the leak was on the owner’s side of the meter. Staff informed the owner of the issue.
- ◆ Began placing new spill kits at all required locations per Nevada County Environmental Health.



- ◆ Continued tracking the active water level of Lake Angela.

Date	Water Surface Elevation		Storage (MG)	
	2025	2026	2025	2026
Jan	7183.5	7189.0	66.5	80.0
Feb	7187.0	7189.3	74.0	82.0
March	7187.0	7192.2	74.0	88.0
April	7187.0	7192.8	74.0	92.0
May				
June				
July				
Aug				
Sept				
Nov				
Dec				

Repairs and Maintenance WWTP

- ◆ Removed the failed flash mixer out of the soda ash silo for repairs.



- ◆ Cleaned and calibrated in-line pH meter.



- ◆ Replaced the level gauges on the vehicle fuel cell.



- ◆ Staff trouble shot priming issues with the RAS pump on membrane Train 4.



- ◆ Replaced head light bulb in Dodge 1500 service truck.

Repairs and Maintenance WTP

- ◆ After replacing the batteries in the Micro-Logic controller at the chlorine station staff reprogrammed the control logic back into the system.



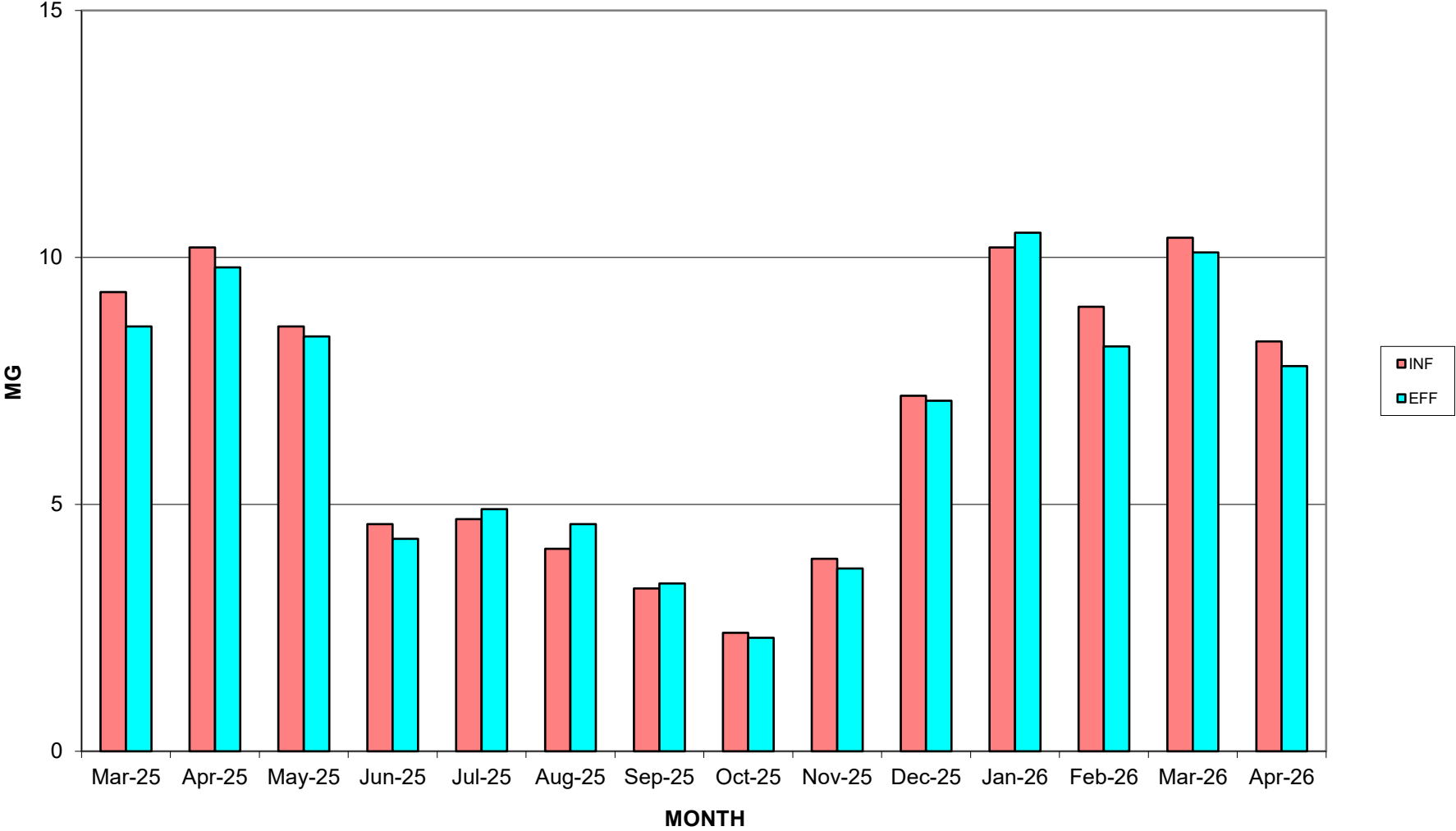
- ◆ Replaced failed wiper switch on the F-250 service truck.



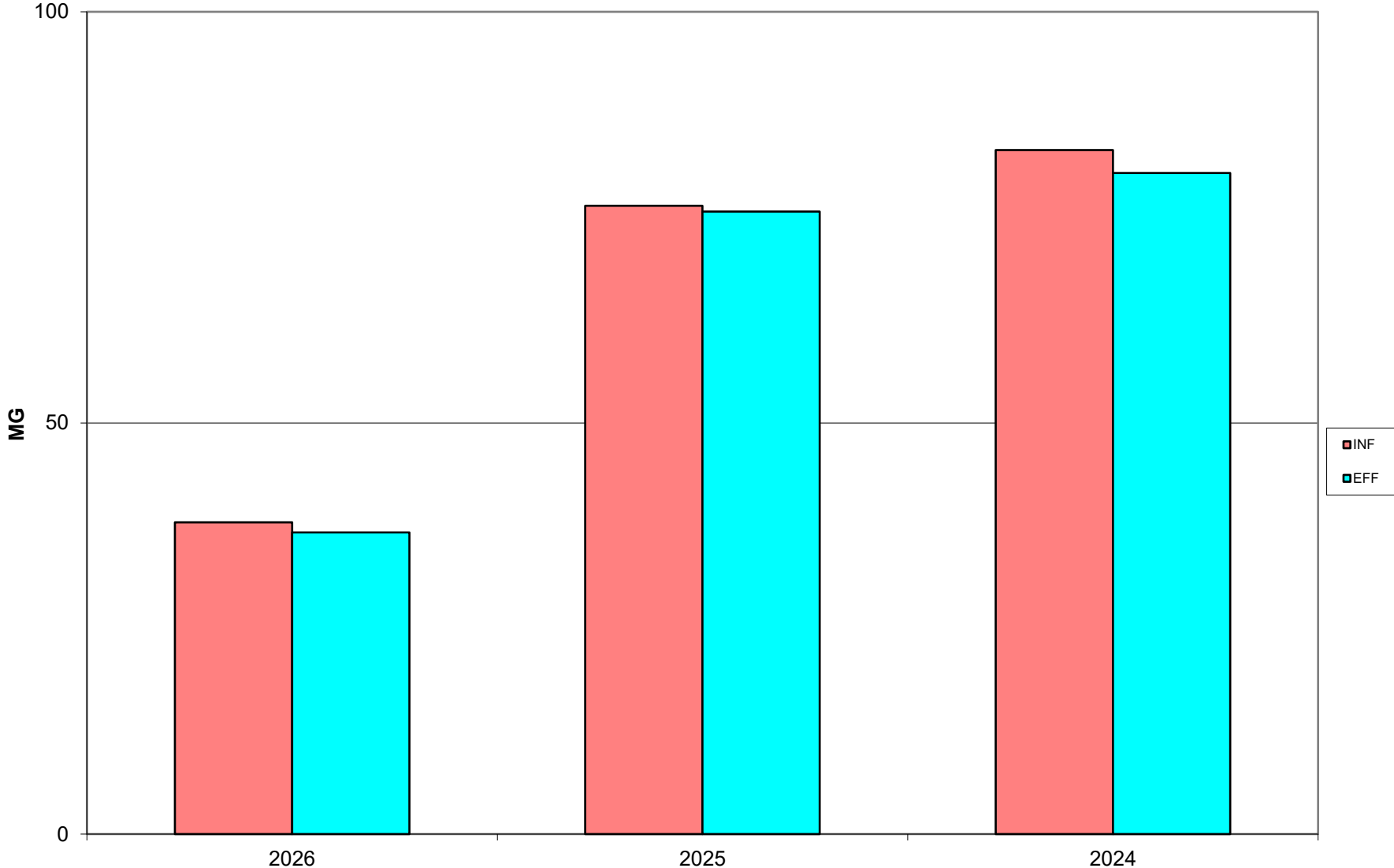
Laboratory

- ◆ Continued river discharge testing.

DONNER SUMMIT PUD WWTP **TOTAL INFLUENT FLOW TO TOTAL**
EFFLUENT FLOW YEAR 2025/2026



**DONNER SUMMIT PUD WWTP ANNUAL TOTAL INFLUENT FLOW TO TOTAL EFFLUENT
FLOW
2026 DATA THROUGH APRIL**



**DONNER SUMMIT PUD WWTP AVG EFFLUENT FLOW TO SNOW
STORAGE/PRODUCTION
YEARS 2025/2026**

