

Agenda Item: 6B

DONNER SUMMIT
PUBLIC UTILITY DISTRICT
WASTEWATER AND FRESH WATER
TREATMENT PLANTS
END OF MONTH OPERATIONS AND MAINTENANCE
SUMMARY

APRIL 2025

Donner Summit Public Utility District Waste Water Flow Data

MONTH OF April 2025		DSPUD Influent	SLCWD Influent	Total Plant Influent	Total Plant EFF River	Total Plant EFF Snow Storage	Total Plant EFF Snow Delivery	DSPUD Fresh Water Treated	SLCWD Fresh Water Treated	Weather	Comments
DATE	DAY	MGD	MGD	MGD	MGD	MGD	MGD	MGD	MGD	Cond	
04/01/25	TUE	0.17275	0.07725	0.250	0.241			0.180	0.0608	Snow	15" Snow 12" Snow
04/02/25	WED	0.23957	0.07343	0.313	0.258			0.171	0.0594	Snow	
04/03/25	THU	0.19228	0.08072	0.273	0.316			0.160	0.0822	Clear	1" Snow 2" Snow
04/04/25	FRI	0.21406	0.06894	0.283	0.258			0.205	0.0000	Clear	
04/05/25	SAT	0.16334	0.07366	0.237	0.210			0.230	0.0000	Clear	
04/06/25	SUN	0.26100	0.07700	0.338	0.201			0.196	0.0000	Clear	
04/07/25	MON	0.21906	0.08094	0.300	0.028			0.211	0.0595	Rain	
04/08/25	TUE	0.22802	0.08398	0.312	0.264			0.219	0.0594	Clear	
04/09/25	WED	0.23246	0.08954	0.322	0.346			0.185	0.0604	Clear	
04/10/25	THU	0.22092	0.08908	0.310	0.499			0.227	0.0905	Clear	
04/11/25	FRI	0.24250	0.09450	0.337	0.400			0.148	0.0000	Pt Cloudy	
04/12/25	SAT	0.26127	0.10173	0.363	0.380			0.077	0.0000	Clear	
04/13/25	SUN	0.27964	0.09936	0.379	0.323			0.207	0.0000	Clear	
04/14/25	MON	0.25896	0.09504	0.354	0.377			0.118	0.0291	Clear	
04/15/25	TUE	0.23344	0.09756	0.331	0.364			0.122	0.0600	Clear	
04/16/25	WED	0.31139	0.10361	0.415	0.363			0.228	0.0600	Pt Cloudy	
04/17/25	THU	0.31647	0.11253	0.429	0.356			0.262	0.0598	Pt Cloudy	
04/18/25	FRI	0.32128	0.10572	0.427	0.358			0.175	0.0000	Clear	
04/19/25	SAT	0.36325	0.10075	0.464	0.439			0.297	0.0000	Clear	
04/20/25	SUN	0.27730	0.09970	0.377	0.300			0.382	0.0000	Clear	
04/21/25	MON	0.26996	0.10404	0.374	0.446			0.174	0.0590	Clear	
04/22/25	TUE	0.30301	0.10499	0.408	0.329			0.324	0.0363	Clear	
04/23/25	WED	0.29285	0.10315	0.396	0.463			0.369	0.0310	Clear	
04/24/25	THU	0.24401	0.09999	0.344	0.376			0.265	0.0666	Cloudy	
04/25/25	FRI	0.27040	0.09160	0.362	0.341			0.226	0.0000	Cloudy	
04/26/25	SAT	0.21446	0.08954	0.304	0.301			0.302	0.0000	Snow	
04/27/25	SUN	0.22127	0.07973	0.301	0.231			0.267	0.0000	Snow	
04/28/25	MON	0.19630	0.07370	0.270	0.335			0.271	0.0514	Clear	
04/29/25	TUE	0.23325	0.07875	0.312	0.311			0.266	0.0405	Clear	
04/30/25	WED	0.24640	0.09060	0.337	0.342			0.219	0.0262	Pt Cloudy	
										2025	30"
4/2025 Daily Totals		7.5008	2.7212	10.222	9.756	0.0000	0.0000	6.6830	0.9921	2024	6"
4/2025 Totalizer Total		7.5008	2.7212	10.222	9.756	0.0000	0.0000	6.6830	0.9679		
Difference		0.0000	0.0000	0.00000	0.0000	0.0000	N/A	0.0000	-0.0241		
Percentage Difference		0.0000	0.0000	0.000%	0.000%	#DIV/0!	N/A	0.000%	-2.493%		
4/2025 AVG/DAY		250,028	90,706	340,733	325,200	0	0	222,767	32,265		
Percentage Flow SLCWD			26.621%								
4/2024 Totalizer Total		7.30221	2.88779	10.1900	10.218	0.000	0.000	7.3820	1.1392		
4/2024 AVG/DAY		243,407	96,260	339,667	340,600	0	0	246,067	37,974		
Percentage Flow SLCWD			28.339%								

Donner Summit Public Utility District WWTP & WTP End of Month Operations and Maintenance Summary

Prepared for: Steve Palmer, General Manager

Prepared by: Jim King, Plant Manager

Date: April 2025

Operations WWTP

- ◆ Discharged 9.8 MG to River.
- ◆ Staff spent time moving and clearing snow from buildings and equipment.
- ◆ Changed flow from river to recycled water tank for use by contractors on one occasion.
- ◆ Work was done on the fiber optic for the plant.



- ◆ Decanted 9' of clear water from solids holding tank after repairing the water feed line to the polymer shack.



- ◆ Returned the rental truck after receiving delivery of a new F-150 service truck.



- ◆ Adjusted the heat exchangers temperature for the changing influent conditions.
- ◆ Received delivery of the first sludge dumpster for the season and began preparing the sludge drying beds for use.



- ◆ Took membrane skid 2 offline due to issues with the RAS pumps air binding. Staff will investigate to determine what the issue is.



- ◆ Began work on clearing the snow from the river access road.



- ◆ Processed 1 USA dig ticket.

Operations Water Plant

- ◆ Completed and sent out monthly potable water reports to DDW.
- ◆ Staff trouble shot problems with the new Star Link communication equipment at the water plant. Found issue with wiring and repaired.
- ◆ Installed a hydrant meter out at Sugar Bowl.
- ◆ Purchased a boat and small motor for use on the lake for the new algae control equipment and sample gathering.



- ◆ Staff took the final bulk load of chemicals to the plant with the snowcat to finish out the winter/spring season.
- ◆ Staff spent time looking for a possible water leak somewhere in the distribution system.
- ◆ Due to the undiscovered water leak staff had to begin running both water treatment filters.

- ◆ Continued tracking the active water level of Lake Angela.

◆ Date	Water Surface Elevation (FT MSL)	Storage (MG)
7/31/24	7189.3	83
8/31/24	7186.1	70
9/30/24	7185.4	68.5
10/31/24	7184.4	67.5
11/15/24	7183.5	66.5
12/23/24	7183.5	66.5
1/31/25	7185.0	68.0
2/28/25	7187.0	74.0
3/31/25	7187.0	74.0
4/30/25	7187.0	74.0

Repairs and Maintenance WWTP

- ◆ Replaced the rotors and brake pads on the Dodge 1500 service truck.
- ◆ Replaced the failed anoxic zone mixer in Reactor-1.



- ◆ Pressure cleaned the floor drain in the polymer feed building that kept plugging up.



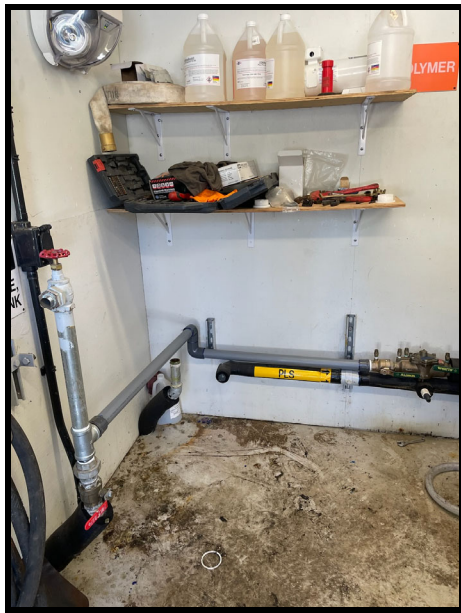
- ◆ Had spool on Membrane Train 4 fail. Replaced with on-site spare.



- ◆ Staff spent time trouble shooting issues with Membrane Skid 2 both trains. RAS pumps keep getting air bound. Finally just took skid 2 off-line until the problem can be solved.



- ◆ Repaired water line in the polymer feed shack.



- ◆ Removed the plant waste station pump for repairs.



- ◆ Staff assisted with bi-annual UV system service and checks.



- ◆ Changed oil and cleaned air filters on the membrane air compressors.



Repairs and Maintenance WTP

- ◆ Replaced broken G-5 Box on Lotta Crabtree.
- ◆ Returned rental Piston Bully used for plowing out the plant.



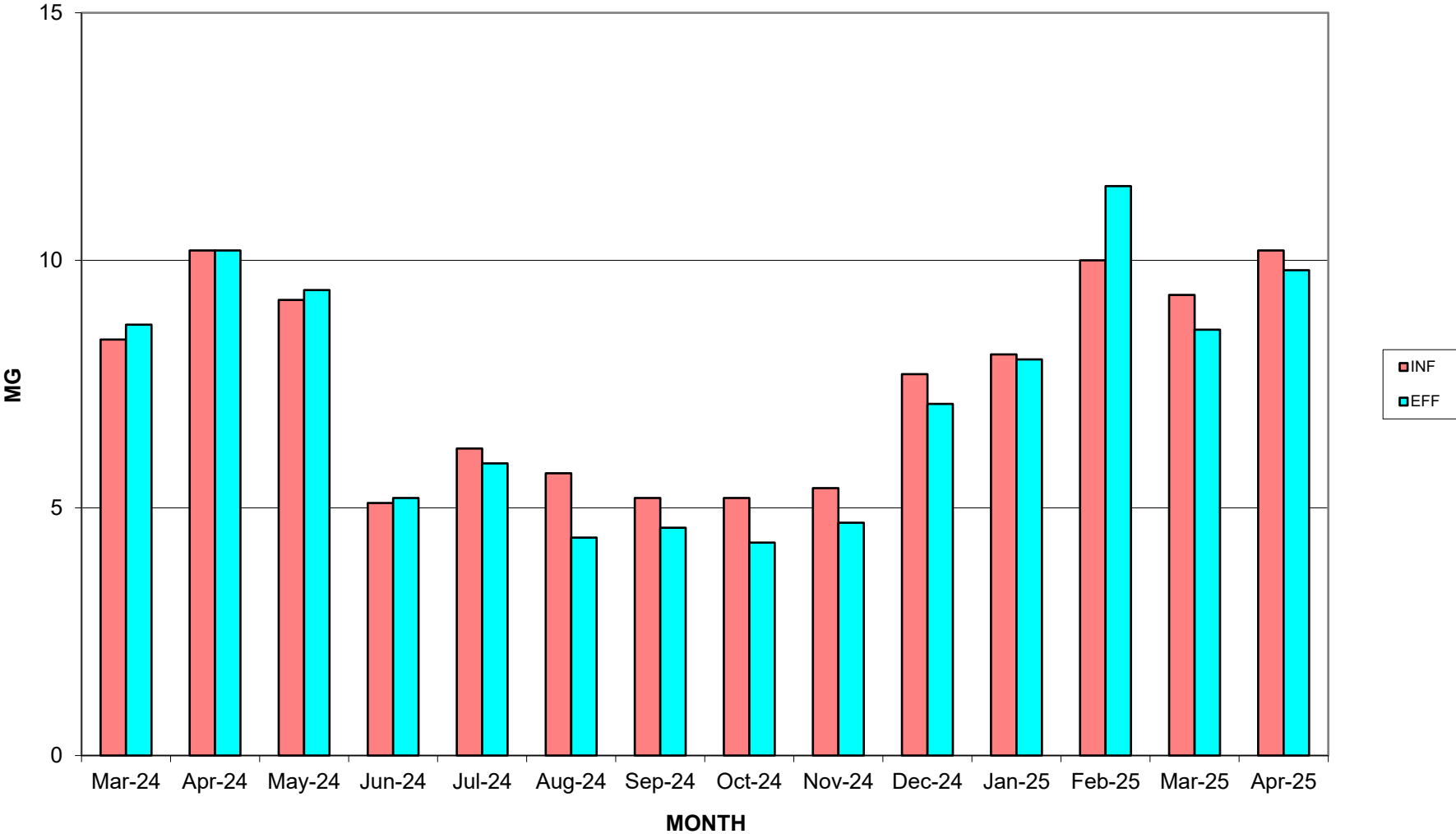
- ◆ Removed the chains from the loader and replaced the fuel cap and wiper blade.



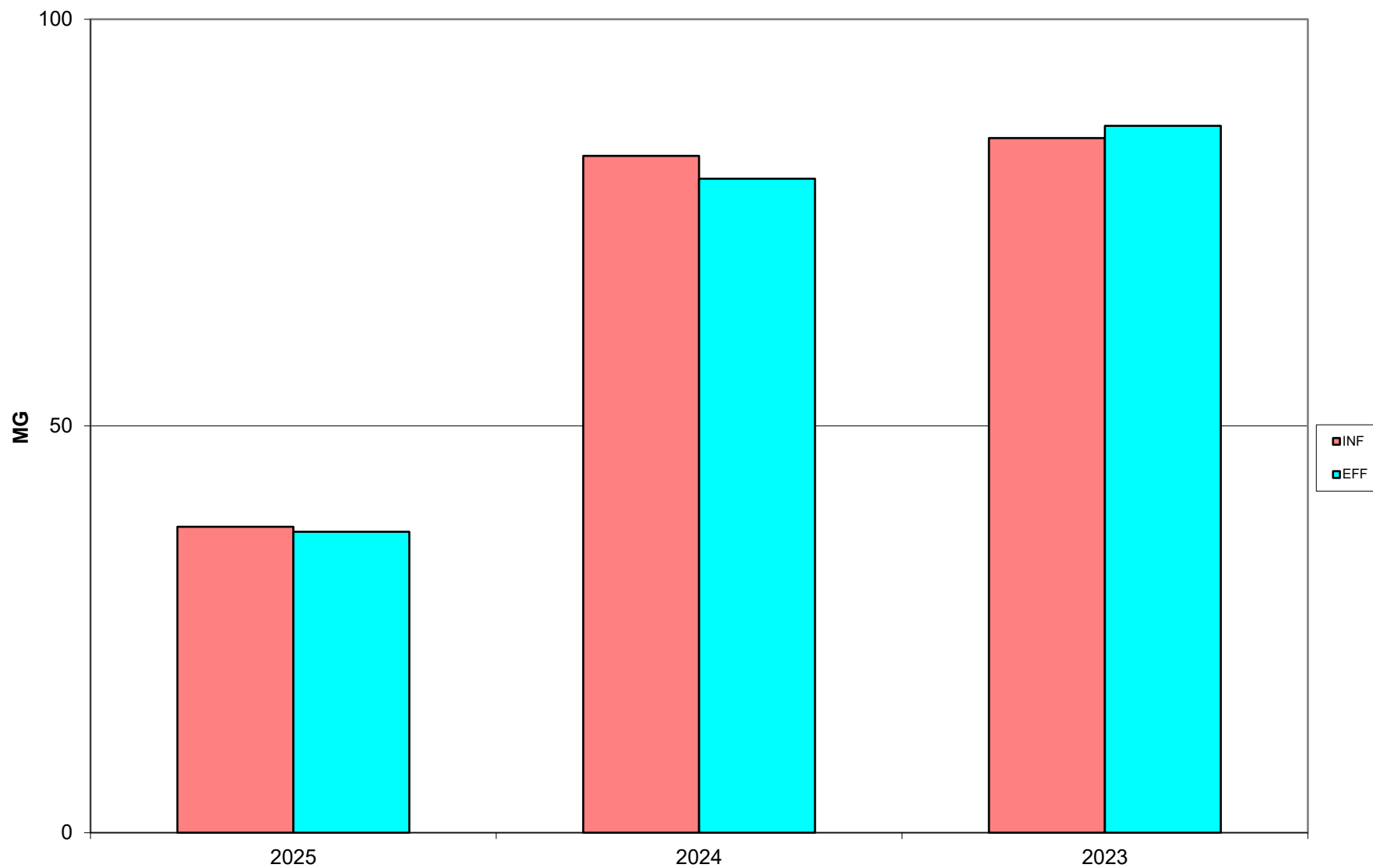
Laboratory

- ◆ Continued river discharge testing along with periotic snow discharge testing.
- ◆ Sent out annual raw water samples for Lake Angela and Big Bend Wells.

DONNER SUMMIT PUD WWTP
TOTAL INFLUENT FLOW TO TOTAL EFFLUENT FLOW
YEAR 2024/2025



**DONNER SUMMIT PUD WWTP
ANNUAL TOTAL INFLUENT FLOW TO TOTAL EFFLUENT FLOW
2025 DATA THROUGH APRIL**



**DONNER SUMMIT PUD WWTP
AVG EFFLUENT FLOW TO SNOW STORAGE/PRODUCTION
YEARS 2024/2025**

