

Agenda Item: 6B

DONNER SUMMIT
PUBLIC UTILITY DISTRICT
WASTEWATER AND FRESH WATER
TREATMENT PLANTS
END OF MONTH OPERATIONS AND MAINTENANCE
SUMMARY

JANUARY 2025

Donner Summit Public Utility District WWTP & WTP End of Month Operations and Maintenance Summary

Prepared for: Steve Palmer, General Manager

Prepared by: Jim King, Plant Manager

Date: January 2025

Operations WWTP

- ◆ Discharged 7.1 MG to River and 0.9 MG to Snow Making.
- ◆ Staff spent time moving and clearing snow from buildings and equipment.
- ◆ Switched from the river to snow storage and drained back the snow making supply line on multiple occasions to keep it from freezing.
- ◆ Staff began returning all of the stored water for snow making to the headworks for retreatment. This was done due to the extended time the water had been stored causing some discoloration. Making it unsuitable for snow production.



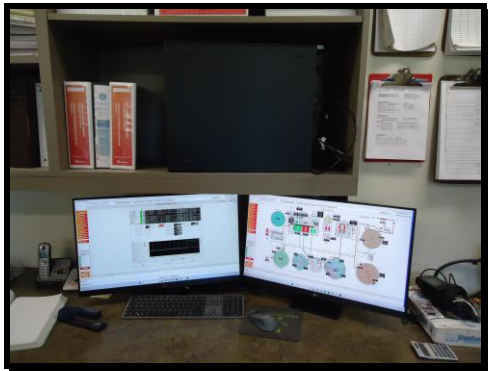
- ◆ Restarted the ammonia feed to compensate for low influent ammonias coming into the plant.



- ◆ Decanted 6.3' of clear water from the solids holding tank to create more storage.



- ◆ Assisted Control Point with restarting the SCADA and other controls after power issues.



- ◆ Staff made multiple air flow adjustments to increase the DO in the reactors to ensure proper treatment.
- ◆ Received bulk Micro C and soda ash deliveries.
- ◆ Staff had to reset all the UV disinfection system due to power issues.



- ◆ Processed 1 USA dig tickets.

Operations Water Plant

- ◆ Completed and sent out monthly potable water reports to DDW.
- ◆ Staff switched from running one filter to running two on multiple occasions to keep up with flows.
- ◆ Staff continued to make multiple adjustments to the treatment process in efforts to keep up with the lakes changing conditions.
- ◆ Continued tracking the active water level of Lake Angela.

◆ Date	Water Surface Elevation (FT MSL)	Storage (MG)
6/27/24	7191.8	88
7/31/24	7189.3	83
8/31/24	7186.1	70
9/30/24	7185.4	68.5
10/31/24	7184.4	67.5
11/15/24	7183.5	66.5
12/23/24	7183.5	66.5
1/31/24	7185.0	68.0

Repairs and Maintenance WWTP

- ◆ Cleaned all the RAS pump air relief valves.



- ◆ Removed for repair, pump #1 in the plant drain station.

- ◆ Drained, cleaned and conducted a check of all the membrane trains.



- ◆ Replaced failed level transducer and high-level float in the plant waste station.
- ◆ Staff reinstalled repaired motor for solids tank blower # 4213.



- ◆ Serviced the reactor blowers.



- ◆ Replaced the drive belt on air compressor #2.

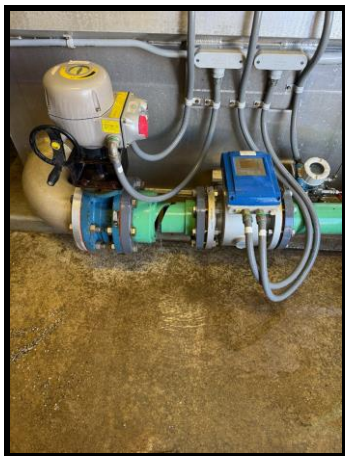


- ◆ Changed the chemical feed tubing on Micro C pump #4.



Repairs and Maintenance WTP

- ◆ Removed for repairs the broken inlet line for filter #1.



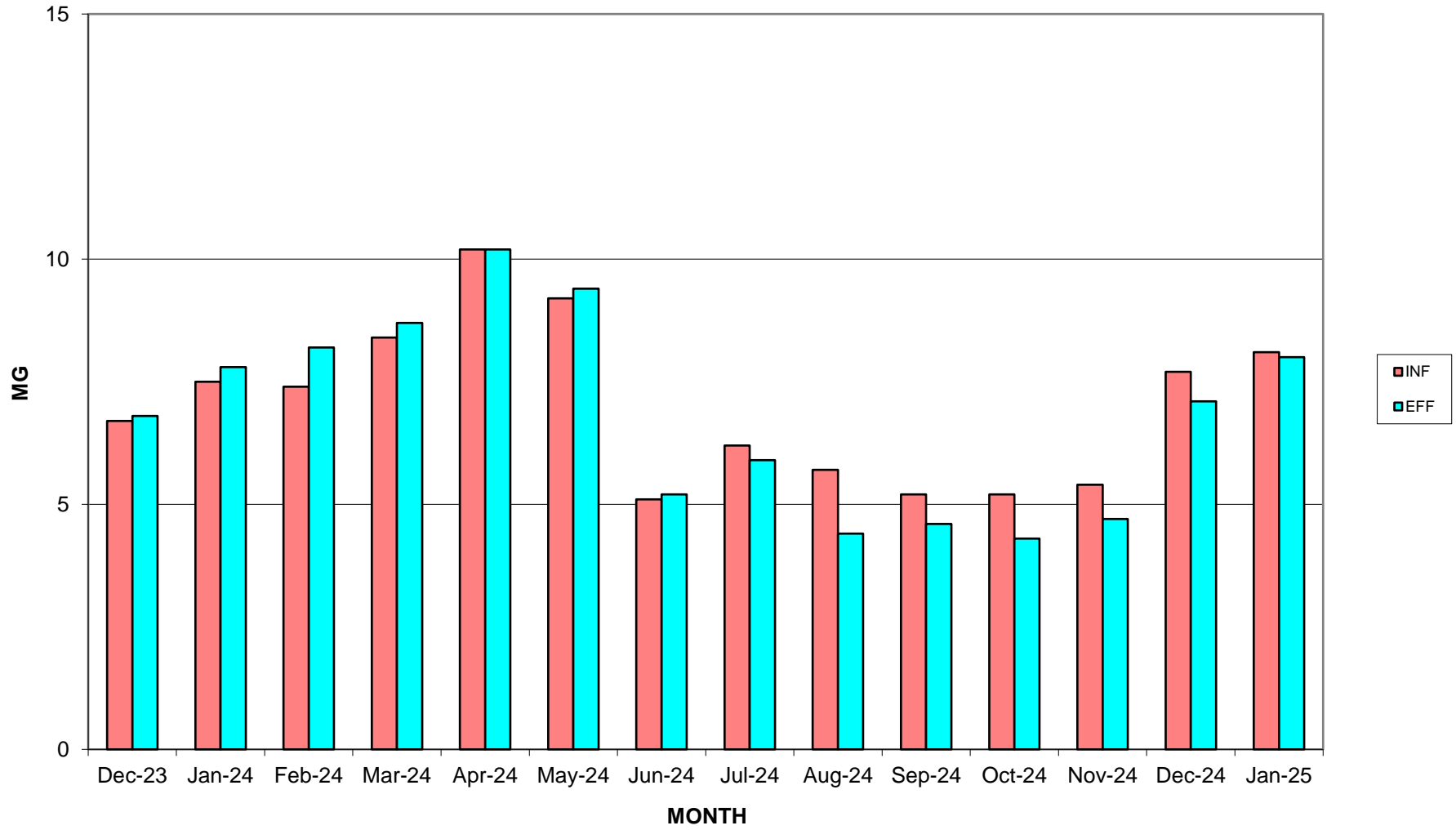
- ◆ Made repairs to the UTV passenger side drive track.
- ◆ Replaced the caustic chemical feed pump tubing.



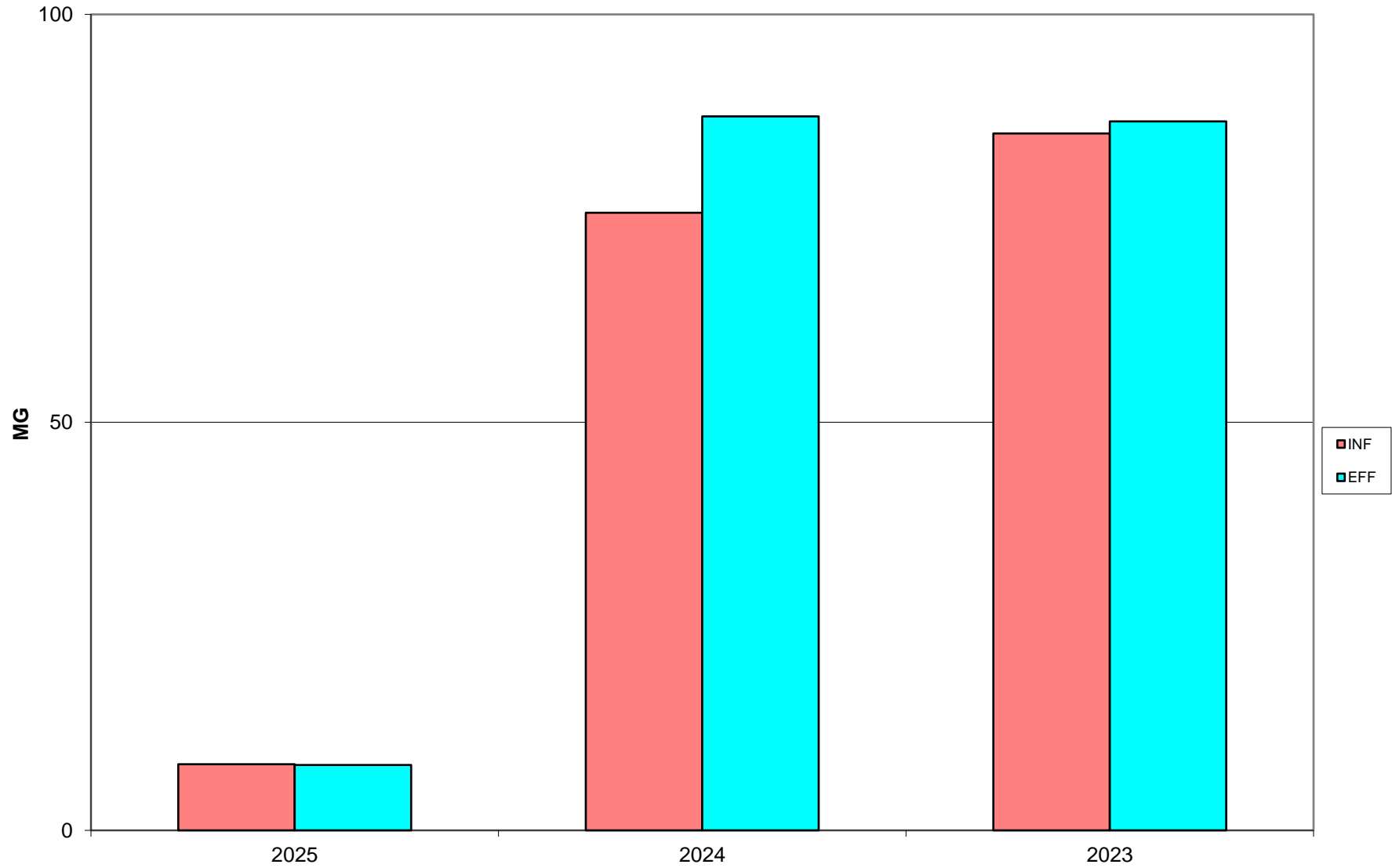
Laboratory

- ◆ Continued river discharge testing along with periotic snow discharge testing.
- ◆ Continued testing for zinc residuals out in the district's wastewater

DONNER SUMMIT PUD WWTP **TOTAL INFLUENT FLOW TO TOTAL**
EFFLUENT FLOW YEAR 2023/2024/2025



**DONNER SUMMIT PUD WWTP ANNUAL TOTAL INFLUENT FLOW TO TOTAL EFFLUENT
FLOW
2025 DATA THROUGH JANUARY**



**DONNER SUMMIT PUD WWTP AVG EFFLUENT FLOW TO SNOW
STORAGE/PRODUCTION
YEARS 2023/2024/2025**

