

Agenda Item: 6B

DONNER SUMMIT
PUBLIC UTILITY DISTRICT
WASTEWATER AND FRESH WATER
TREATMENT PLANTS
END OF MONTH OPERATIONS AND MAINTENANCE
SUMMARY

NOVEMBER 2025

Donner Summit Public Utility District Waste Water Flow Data

December 16, 2025
Agenda Item: 6B

MONTH OF November 2025		DSPUD Influent	SLCWD Influent	Total Plant Influent	Total Plant EFF River	Total Plant EFF Recycled	Total Plant EFF Snow Delivery	DSPUD Fresh Water Treated	SLCWD Fresh Water Treated	Weather	Comments
DATE	DAY	MGD	MGD	MGD	MGD	MGD	MGD	MGD	MGD	Cond	
11/01/25	SAT	0.03873	0.01727	0.05600	0.0550	0.0000	0.0000	0.079	0.0000	Clear	5" Snow 3" Snow
11/02/25	SUN	0.05339	0.01861	0.07200	0.0710	0.0000	0.0020	0.046	0.0000	Clear	
11/03/25	MON	0.01956	0.02544	0.04500	0.0430	0.0000	0.0050	0.044	0.0522	Clear	
11/04/25	TUE	0.04770	0.02530	0.07300	0.0660	0.0000	0.0000	0.171	0.0675	Cloudy	
11/05/25	WED	0.07973	0.03927	0.11900	0.1210	0.0000	0.0000	0.228	0.0599	Cloudy	
11/06/25	THU	0.10984	0.02316	0.13300	0.1280	0.0000	0.0000	0.053	0.0366	Cloudy	
11/07/25	FRI	0.16690	0.01810	0.18500	0.1750	0.0000	0.0000	0.043	0.0000	Rain	
11/08/25	SAT	0.16486	0.02114	0.18600	0.1860	0.0000	0.0291	0.049	0.0000	Clear	
11/09/25	SUN	0.23407	0.02193	0.25600	0.2150	0.0000	0.3439	0.053	0.0000	Clear	
11/10/25	MON	0.14134	0.02766	0.16900	0.0000	0.0000	0.0000	0.062	0.0630	clear	
11/11/25	TUE	0.05631	0.02269	0.07900	0.0000	0.0000	0.0000	0.049	0.0000	Clear	
11/12/25	WED	0.04987	0.02113	0.07100	0.0000	0.0000	0.0000	0.038	0.1001	Clear	
11/13/25	THU	0.03498	0.03802	0.07300	0.0750	0.0000	0.0000	0.068	0.0595	Rain	
11/14/25	FRI	0.13648	0.04352	0.18000	0.1700	0.0000	0.0000	0.057	0.0000	Cloudy	
11/15/25	SAT	0.10531	0.03169	0.13700	0.1370	0.0000	0.0000	0.042	0.0000	Cloudy	
11/16/25	SUN	0.09348	0.04852	0.14200	0.1450	0.0000	0.0000	0.039	0.0000	Cloudy	
11/17/25	MON	0.11186	0.04614	0.15800	0.1510	0.0000	0.0000	0.054	0.0443	Snow	
11/18/25	TUE	0.10756	0.05144	0.15900	0.1550	0.0000	0.0000	0.078	0.0290	Cloudy	
11/19/25	WED	0.12061	0.03239	0.15300	0.1450	0.0000	0.0000	0.043	0.0669	Clear	
11/20/25	THU	0.09782	0.03418	0.13200	0.1270	0.0000	0.0000	0.039	0.0421	Snow	
11/21/25	FRI	0.07294	0.02906	0.10200	0.1040	0.0000	0.0000	0.046	0.0000	Cloudy	
11/22/25	SAT	0.10111	0.03389	0.13500	0.1330	0.0000	0.0000	0.075	0.0000	Clear	
11/23/25	SUN	0.09096	0.03504	0.12600	0.1050	0.0000	0.0550	0.052	0.0000	Clear	
11/24/25	MON	0.09660	0.05040	0.14700	0.1610	0.0000	0.3380	0.058	0.1388	Clear	
11/25/25	TUE	0.08639	0.04461	0.13100	0.0200	0.0000	0.0880	0.045	0.0535	Clear	
11/26/25	WED	0.09563	0.04737	0.14300	0.1270	0.0000	0.0040	0.091	0.0673	Clear	
11/27/25	THU	0.10015	0.04785	0.14800	0.0150	0.0000	0.0020	0.045	0.0000	Clear	
11/28/25	FRI	0.11338	0.04662	0.16000	0.0000	0.0000	0.0010	0.045	0.0000	Clear	
11/29/25	SAT	0.09550	0.04850	0.14400	0.0000	0.0000	0.0000	0.047	0.0534	Clear	
11/30/25	SUN	0.08622	0.03478	0.12100	0.0000	0.0000	0.0040	0.064	0.0000	Pt Cloudy	
11/2025 Daily Totals		2.90928	1.02572	3.93500	2.8300	0.0000	0.872	1.9030	0.9343	2025	8" Snow
11/2025 Totalizer Total		2.90928	1.02572	3.93500	2.8300	0.0000	0.872	1.9030	0.9735	2024	23" Snow
Difference		0.00000	0.00000	0.00000	0.0000	0.0000	N/A	0.0000	0.0392		
Percentage Difference		0.00%	0.000%	0.000%	0.000%	#DIV/0!	N/A	0.000%	4.026%		
11/2025 AVG/DAY		96,976	34,191	131,167	94,333	0	29,067	63,433	32,448		
Percentage Flow SLCWD			26.067%								
11/2024 Totalizer Total		4.58603	0.76497	5.35100	4.5180	0.162	0.416	5.1860	1.017000		
11/2024 AVG/DAY		152,868	25,499	178,367	150,600	5,410	13,867	172,867	33,900		
Percentage Flow SLCWD			14.296%								

Donner Summit Public Utility District WWTP & WTP End of Month Operations and Maintenance Summary

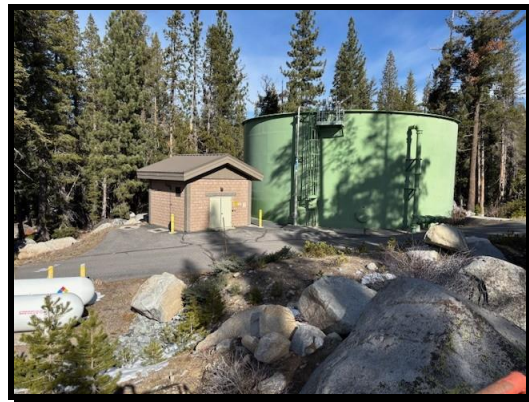
Prepared for: Steve Palmer, General Manager

Prepared by: Jim King, Plant Manager

Date: November 2025

Operations WWTP

- ◆ Discharged 2.8 MG to the river.
- ◆ Snow making water discharged 0.87 MG.
- ◆ Staff switched from river discharge to snow making water storage twice during the month.
- ◆ Drained residual rainwater out of EQ2.



- ◆ Cleaned and calibrated the new in-line pH and temperature meter.



- ◆ Staff conducted a sewer lateral test at 21907 Donner Pass Rd.
- ◆ Staff assisted Aqua Sierra Controls with the final radio upgrades throughout the district.
- ◆ Returned from the irrigation storage tank all unused stored recycled water in preparation for fresh snow making water.
- ◆ Had staff meeting with the Anthem insurance representative to go over navigating the district's health insurance.
- ◆ Removed a fallen tree from behind the membrane building.



- ◆ Processed 2 USA dig tickets.

Operations Water Plant

- ◆ Completed and sent out monthly potable water reports to DDW.
- ◆ Replumbed piping for the chlorine feed system, allowing better and safer control of the system.



- ◆ Staff made multiple chemical feed adjustments to the process due to changing raw water conditions.



- ◆ Put Reservoir 2 back on-line after cleaning, coating, repairs and testing was completed.



- ◆ Drained and removed from service the temporary Reservoir 2 tank.



- ◆ Performed the quarterly turbidity meter calibrations.



- ◆ Continued tracking the active water level of Lake Angela.

Date	Water Surface Elevation		Storage (MG)	
	2024	2025	2024	2025
Jan	7189.8	7183.5	88.5	66.5
Feb	7189.8	7185.0	88.5	68.0
Mar	7189.8	7187.0	88.5	74.0
Apr	7192.2	7187.0	90.0	74.0
May	7192.2	7187.0	90.0	74.0
June	7191.8	7192.8	88.0	95.0
July	7189.3	7192.6	83.0	88.0
Aug	7186.1	7191.8	70.0	87.0
Sep	7185.4	7189.0	68.5	83.0
Oct	7184.4	7187.8	67.5	76.5
Nov	7183.5	7187.3	66.5	73.9
Dec	7183.5		63.5	

Repairs and Maintenance WWTP

- ◆ Replaced a failed fan in the irrigation pump building heater.



- ◆ Replaced the thermostat in the ammonia feed room.

- ◆ Trouble shot electrical issues at sewer lift station L-4. Also as seen in the picture the power pole needs relocating soon.



- ◆ Cleaned upper loader bay.
- ◆ Installed a new battery on the emergency standby portable generator.



Repairs and Maintenance WTP

- ◆ Welded the levers of the check valves at Boral pump station until new ones can be installed.
- ◆ Replaced the UPS battery backup at Boreal pump station.



- ◆ Completed installation of the dedicated raw water influent sample line.



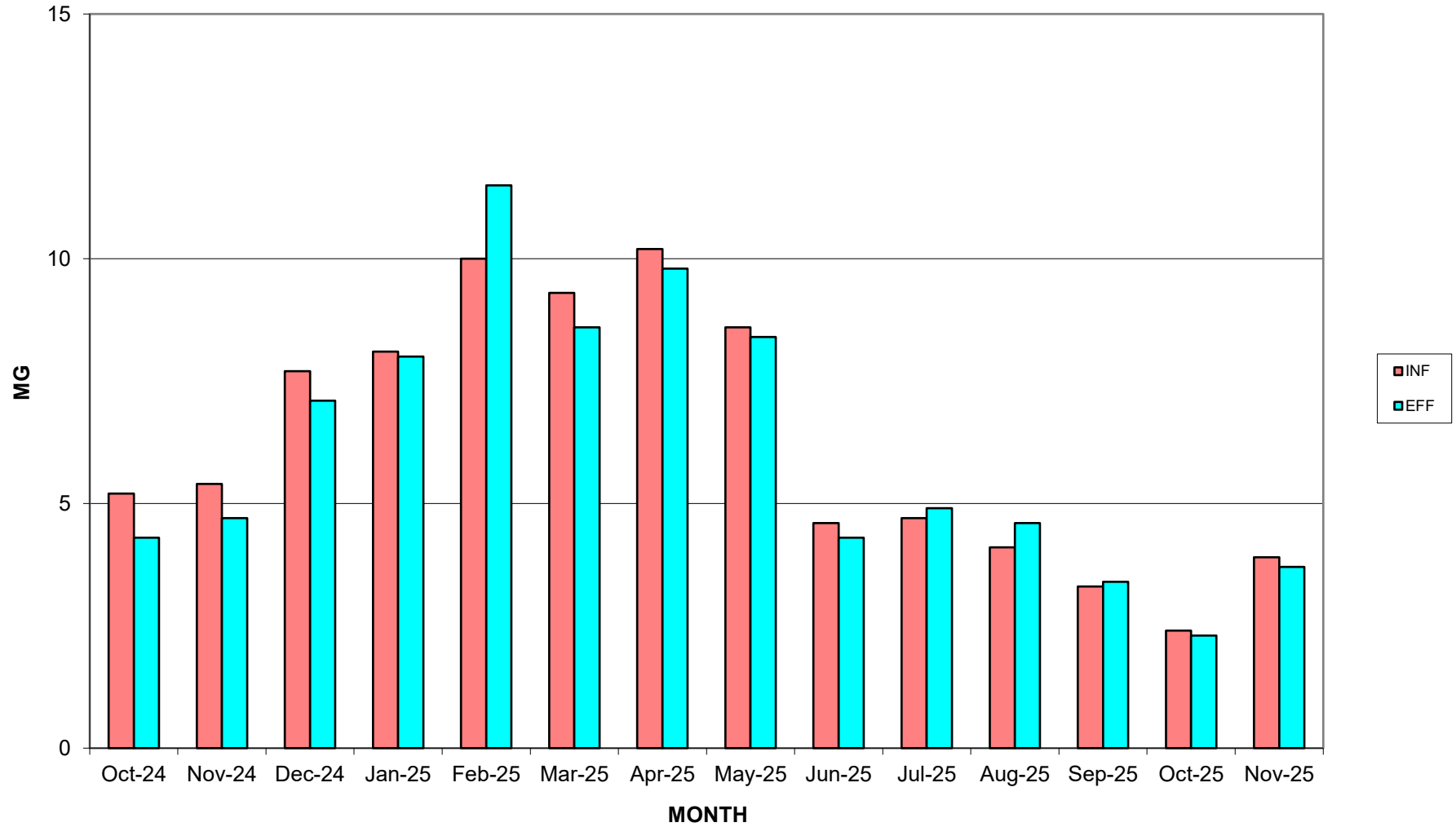
- ◆ Installed a blind flange on the temporary bypass line for the Reservoir 2 repairs.



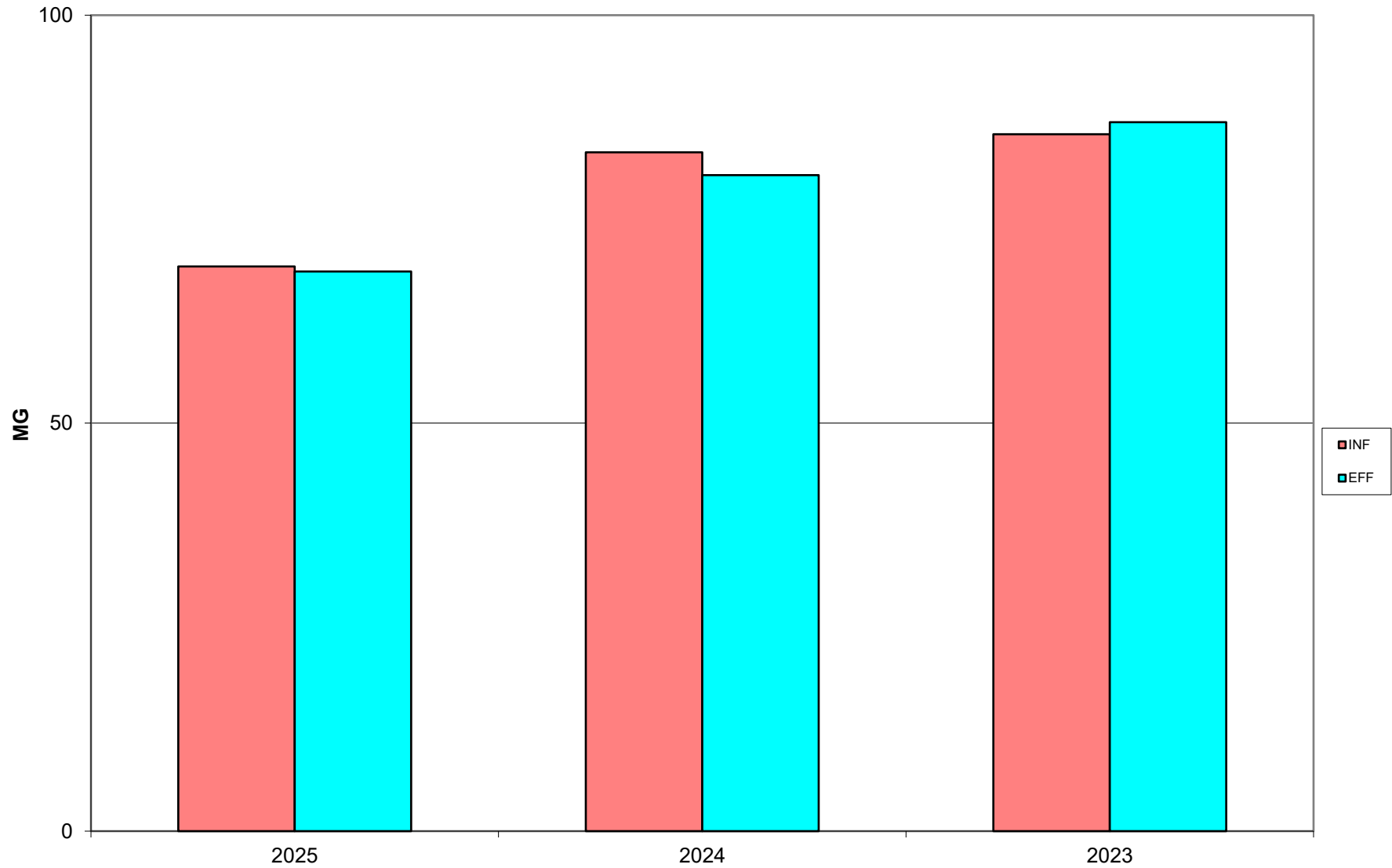
Laboratory

- ◆ Continued river discharge testing.
- ◆ Continued snow water storage testing.

**DONNER SUMMIT PUD WWTP
TOTAL INFLUENT FLOW TO TOTAL
EFFLUENT FLOW YEAR 2024/2025**



**DONNER SUMMIT PUD WWTP
ANNUAL TOTAL INFLUENT FLOW TO TOTAL EFFLUENT FLOW
2025 DATA THROUGH NOVEMBER**



**DONNER SUMMIT PUD WWTP
AVG EFFLUENT FLOW TO SNOW
STORAGE/PRODUCTION
YEARS 2024/2025**

